

When the rtk base station is connected to an external power source the battery cannot be removed





Overview

What is an RTK base station?

An RTK base station is a fixed GNSS receiver placed on a known or unknown point. It used satellite signals to continuously calculate its position. Then it sends real-time correction data to a rover in the field. Thus, your rover can achieve maximum accuracy, up to centimeters. This practice replaces you being off by several metres using GPS alone.

Why should I set up my own RTK base station?

Setting up your own RTK base station gives you full control over your GNSS workflow, saves on subscription costs, and boosts your field accuracy. Whether you're working on construction, land surveying, or agriculture, this step-by-step guide will help you confidently set up a stable RTK base station using professional-grade equipment.

How do I power a RTK base station?

To power the base station from a power bank or PC. RTK base station has an SMA connector to connect an antenna. RTK base station does not include, but requires a good quality GPS/ GNSS antenna. RTK base station supports full L1/L2/L5 bands.

Does RTK base station have an SMA connector?

RTK base station has an SMA connector to connect an antenna. RTK base station does not include, but requires a good quality GPS/ GNSS antenna. RTK base station supports full L1/L2/L5 bands. If you want to get the most out of this base, we recommend to use Budget Survey Tripleband GNSS Antenna (IP66).



When the rtk base station is connected to an external power source



[\[2023\] A Comprehensive Overview about the RTK Base](#)

What is the RTK Base? RTK, or Real-Time Kinematic is a method that boosts the precision of GNSS (Global Navigation Satellite System) signals like GPS, Glonass, Galileo, and BeiDou. ...

Base hardware , Wiki.js

When the power switch is in the middle switch position, no power is supplied to the base station components. Select DC or AC power supply. The ...

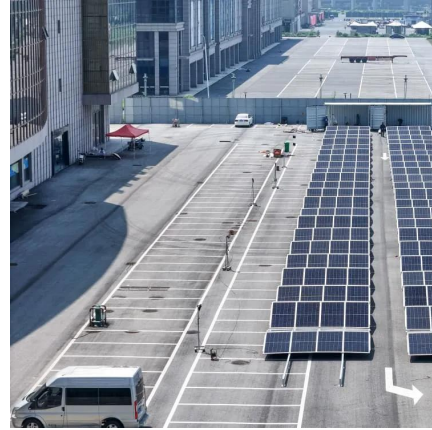


Base hardware , Wiki.js

When the power switch is in the middle switch position, no power is supplied to the base station components. Select DC or AC power supply. The weatherproof enclosure is water resistant ...

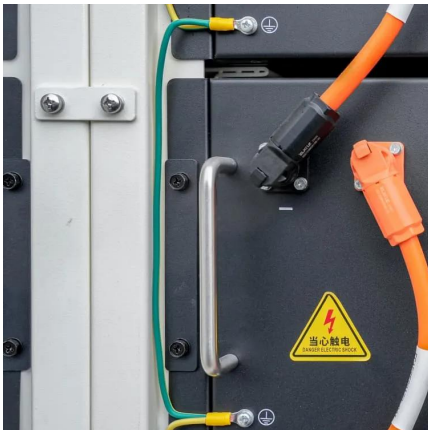
[Real-Time-Kinematics-RTK-Manual-EN-V23-1](#)

Sep 19, 2023 · Dewesoft provides all hardware accessories needed for the RTK upgrade - base station, antennas and 3G and RF modems for data transmission between car and base station.



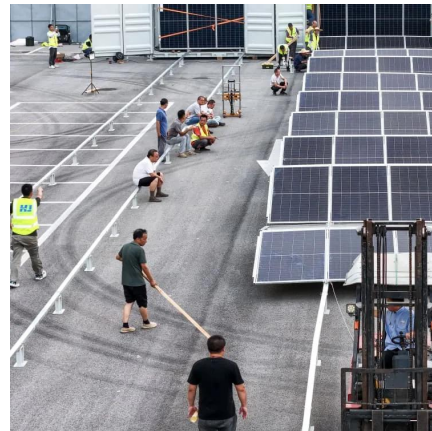
[Rover operation guidelines \(SPS985/SPS986 and SPS Modular\)](#)

Dec 1, 2025 · Rover operation guidelines (SPS985/SPS986 and SPS Modular) Real-Time Kinematic (RTK) operation provides centimeter-level accuracy by eliminating errors that are ...



[User Guide: RTK Base Station](#)

Oct 12, 2025 · The ArduSimple RTK Base Station, powered by the Septentrio mosaic-X5 module, is designed to function as a Continuously Operating ...



[XYLEM SURFBEE RTK BASE STATION MANUAL Pdf Download](#)

Setting up the RTK Base Station Ensure the base station is charged or connected to a stable power source. Turning on the RTK Base Station Flip the power switch to "ON" position, and ...





[XYLEM SURFBEE RTK BASE STATION ...](#)

Setting up the RTK Base Station Ensure the base station is charged or connected to a stable power source. Turning on the RTK Base Station ...



[\[2023\] A Comprehensive Overview about the ...](#)

What is the RTK Base? RTK, or Real-Time Kinematic is a method that boosts the precision of GNSS (Global Navigation Satellite System) signals like ...

[Step-by-Step Guide to Setting Up an RTK ...](#)

...

Jun 5, 2025 · Follow our detailed guide to correctly set up an RTK base station for accurate surveying. Simplify your workflow with expert tips and ...



[How to Set Up Your Own RTK Base Station Step-by-Step Guide](#)

Sep 27, 2025 · Set up RTK base station from scratch. This guide covers gear, setup steps, GNSS configuration, tips to ensure stable corrections for high-precision surveying.



Step-by-Step Guide to Setting Up an RTK Base Station

Jun 5, 2025 · Follow our detailed guide to correctly set up an RTK base station for accurate surveying. Simplify your workflow with expert tips and best practices.



USV : RTK Base Station Check List Version 1.4

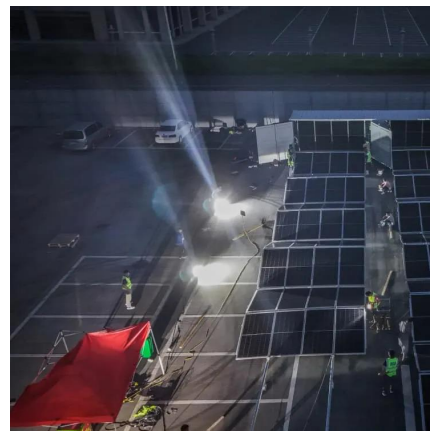
here it has a clear line of sight to the sky. Mount it on a stable support and insert it into the central slot. Then on the upper right-hand section of the case. Make sure th Setting up the

...



User Guide: RTK Base Station

Oct 12, 2025 · The ArduSimple RTK Base Station, powered by the Septentrio mosaic-X5 module, is designed to function as a Continuously Operating Reference Station (CORS) to provide high ...



Base Station Quick Guide

Sep 30, 2022 · The installation area of the base station should be at least 200m away from any high-power radio sources (such as TV stations, microwave stations, etc.), and at least 50m ...



Contact Us

For technical specifications, project proposals, or partnership inquiries, please visit:
<https://www.meble-decorator.pl>

Scan QR Code for More Information



<https://www.meble-decorator.pl>