

What type of wind power supply does the 5g base station use





Overview

How much power does a 5G base station use?

Each nation has a different 5G strategy. For 5G, China uses 3.5GHz as the frequency. Then, a 5G base station resembles a 4G system, but it's on a much larger scale. For sub-6GHz in 5G, let's say you have a macro base station. The power levels at the antenna range from 40 watts, 80 watts or 100 watts.

What is a 5G base station?

A 5G network base-station connects other wireless devices to a central hub. A look at 5G base-station architecture includes various equipment, such as a 5G base station power amplifier, which converts signals from RF antennas to BUU cabinets (baseband unit in wireless stations).

Will 5G use micro-cells?

Therefore, in 5G networks, high-frequency resources will no longer use macro base stations, micro-cells become the mainstream, and the small base stations will be used as the basic unit for ultra-intensive networking, that is, small base stations dense deployment.

What is HVDC system for 5G network?

With the increase of power density and voltage drops on the power transmission line in macro base, it is recommended to use HVDC system for the 5G network. Requirements to ICT equipment Power Supply Unit (PSU) and supporting facilities. -42V. It means that if the voltage drop is more than 6V, the ICT equipment will be protected.



What type of wind power supply does the 5g base station use



[5G base station power supply wind power generation ...](#)

Dec 1, 2025 · The power levels at the antenna range from 40 watts, 80 watts or 100 watts. How does a 5G base station reduce OPEX? This technique reduces opex by putting a base station ...

Which unit will build the 5G communication base station and wind power

What are the components of a 5G base station? Baseband Unit (BBU): Handles baseband signal processing. Remote Radio Unit (RRU): Converts signals to radio frequencies for transmission. ...



[What type of wind power supply does the 5g base station use](#)

The 5G network architecture uses multiple types of power supplies. Requirements include units that work indoors and outdoors, offer surge protection, provide step changes in voltage, and ...

[5G base station wind and solar hybrid power supply](#)

Does a 5G base station use hybrid energy? In this paper, hybrid energy utilization was studied for the base station in a 5G network. To minimize AC power usage from the hybrid energy system

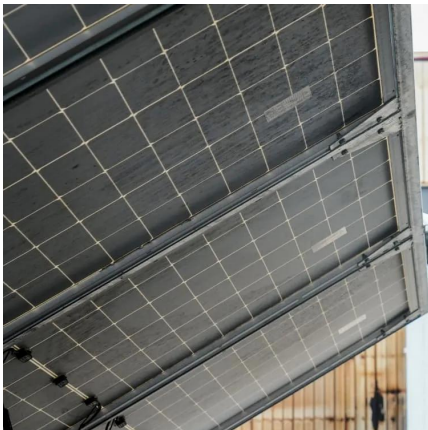


...



[5G Base Station Installed on Offshore Wind ...](#)

Jun 29, 2023 · The base station is the first application of 700Mhz 5G network technology in the near-shore deep-water area in Guangdong Province, ...



[Power supply structure of 5G communication base station](#)

Nov 3, 2025 · The equipment ensures that devices across the infrastructure stack receive reliable power from the mains network, wherever they happen to reside. With it, individuals and ...



[5G macro base station power supply design strategy and ...](#)

Oct 24, 2024 · Suggestions on 5G small base station power supply design In terms of small base stations, Cheng Wentao believes that small base stations in the 5G era are very different from ...





[5G Base Station Installed on Offshore Wind Power Platform ...](#)

Jun 29, 2023 · The base station is the first application of 700Mhz 5G network technology in the near-shore deep-water area in Guangdong Province, and has the advantages of low signal ...

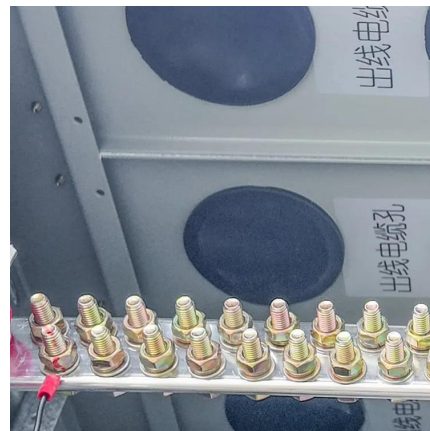


[Study on Power Feeding System for 5G Network](#)

Oct 24, 2019 · High Voltage Direct Current (HVDC) power supply HVDC systems are mainly used in telecommunication rooms and data centers, not in the Base station. With the increase of ...

[5g base station and power grid wind power](#)

Nov 20, 2025 · This in turn could cut retrofiting costs for a single site by more than. Does a 5G base station use energy storage power supply? In this article, we assumed that the 5G base ...



[Key Technologies and Solutions for 5G Base Station Power Supply](#)

Decoding the Power Drain: From Physics to Field Deployment The core challenge lies in nonlinear energy scaling. While 5G's spectral efficiency improves 8x over 4G, its energy-per ...



Contact Us

For technical specifications, project proposals, or partnership inquiries, please visit:
<https://www.meble-decorator.pl>

Scan QR Code for More Information



<https://www.meble-decorator.pl>