

# What is the normal current of the battery cabinet





## Overview

---

How do you know if a battery is good?

Specifications such as terminal voltage, internal resistance, energy capacity, efficiency, and Cold Cranking Amps provide a clear picture of battery performance. Parameters like depth of discharge, temperature sensitivity, and cycle life help determine a battery's durability and suitability for different environments.

Why does a battery have a different ampere-hour rating?

The problem here is that ampere-hours do not take into account the voltage of the battery and so two batteries of the same physical size may have a different number of cells, and therefore a different ampere-hour rating, even though the energy stored may be the exact same quantity in mega joules.

Why are battery specifications important?

These battery specifications are especially important in practical applications, such as automotive systems, renewable energy storage, and portable electronics, where performance, reliability, and safety are critical.

How do you know if a battery has a state of charge?

**State Of Charge (SOC)** The state of charge of a battery can often be determined from the condition of the electrolyte. In a lead-acid battery, for example, the specific gravity of the electrolyte indicates the state of charge of the battery. Other batteries may indicate the SOC by the terminal voltage.

**Depth of Discharge (DoD)**



## What is the normal current of the battery cabinet

---

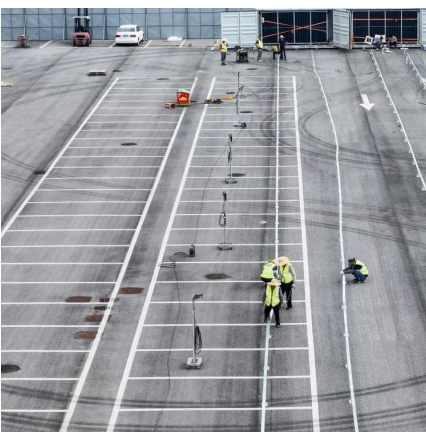


### [Battery Specifications Explained . Parameters](#)

3 days ago · The article provides an overview of key battery specifications essential for comparison and performance evaluation, including terminal voltage, internal resistance, ...

### [Battery Cabinet Current Limits . HuiJue Group E-Site](#)

Why Current Management Defines Modern Energy Storage Success Have you ever wondered why battery cabinet current limits account for 43% of thermal runaway incidents in grid-scale ...



### [UBC80 Battery Cabinet Installation. Operation.](#)

Feb 3, 2025 · 4. SYSTEM OVERVIEW During normal operating conditions the UPS or charger supplies power to the load as well as the necessary power required to keep the batteries at the ...

### [How much current is normal for the battery cabinet to ...](#)

A battery can supply a current as high as its capacity rating. For example, a 1,000 mAh (1 Ah) battery can theoretically supply 1 A for one hour or 2 A for half an hour. The amount of current ...



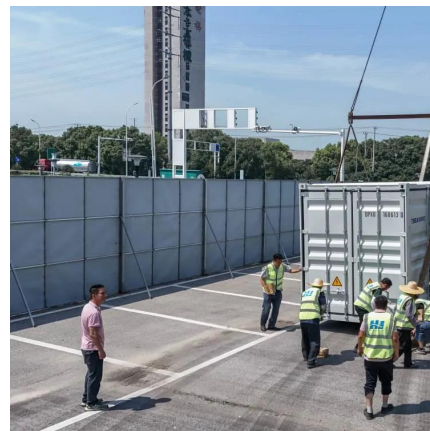
### [Explanations for different current values inside a battery](#)

Jun 4, 2020 · I was just learning about what happens to current inside a battery, and my professor gave an example: Let's say we have a 1V battery connected to a 1Ω load. Then ...



### [Understanding Voltage, Current and Capacity in Batteries](#)

Oct 14, 2025 · Mastering voltage, current, and capacity is key to optimizing battery performance and making informed choices--discover how these concepts impact your devices.



### [Battery Current: AC or DC, Current Limitation and How Current ...](#)

3 days ago · In practical terms, this means a battery pack's "normal" current capability (like 10A, 20A, or 50A) is completely different from its short-circuit current, which can be 20-100 times ...





## [-48 VDC Battery Cabinet Installation and User Manual ...](#)

Apr 21, 2022 · Although the DC voltage is not hazardously high, the battery can deliver large amounts of current. Exercise extreme caution not to inadvertently contact or have any tool ...



## **The Complete Guide to Choosing a Safe and Reliable Battery Storage Cabinet**

Lithium-ion batteries are now essential across industries, powering everything from small electronics to large material-handling equipment. As their use expands, so does the need for ...

## [What is the starting current of the first-level energy ...](#)

What is a battery energy storage system?  
Battery energy storage system (BESS): Consists of Power Conversion Equipment (PCE), battery system(s) and isolation and protection devices.  
...



## **Contact Us**

---

For technical specifications, project proposals, or partnership inquiries, please visit:  
<https://www.meble-decorator.pl>



## Scan QR Code for More Information



<https://www.meble-decorator.pl>