

What is a double-glass bifacial module





Overview

Are double glass modules bifacial?

Dual-sided energy Capture: Many double glass modules are bifacial, allowing them to harness sunlight from both sides. This can lead to energy gains of up to 25%, especially when installed over reflective surfaces.

Should bifacial panels have double/dual glass?

These days, many bifacial panel designs incorporate double/dual glass at the rear of the modules. Glass-glass panels seem to better transmit light and are more resistant to unpredictable weather, moisture, corrosion, and have good mechanical load capacity.

Why are glass-glass bifacial modules becoming more popular?

Due to their better reliability, glass-glass bifacial configurations have a larger portion of the worldwide bifacial module market share. Glass shortages, weight concerns for larger format modules, and decreasing prices for transparent backsheets have caused some manufacturers to switch to a glass-transparent backsheet structure.

What is a bifacial solar module?

The front of a bifacial solar module is covered with a protective glass and the rear side may be made of either glass or transparent polymer backsheet that allows sunlight to pass through. This stands in contrast to conventional solar panels which have opaque backsheets.



What is a double-glass bifacial module



[What is a Bifacial Solar Panel? A Deep Dive into Double ...](#)

Jul 3, 2024 · Bifacials with a double-glass design are more durable, offering enhanced protection against environmental factors like moisture and degradation, potentially leading to a longer ...

[Bifacial Solar Modules , Maysun Solar](#)

Single-glass bifacial modules are lightweight and suitable for rooftop installations, while double-glass bifacial modules provide greater resistance to weather conditions, making them ideal for ...



[Double the strengths, double the benefits](#)

Feb 21, 2025 · Increased efficiency with bifacial technology Dual-sided energy Capture: Many double glass modules are bifacial, allowing them ...



The Difference Between Bifacial Module and Double Glass Bifacial Module

Sep 4, 2023 · In summary, the primary difference between a bifacial module and a double glass bifacial module is the presence of glass on both



sides in the latter, which provides improved ...

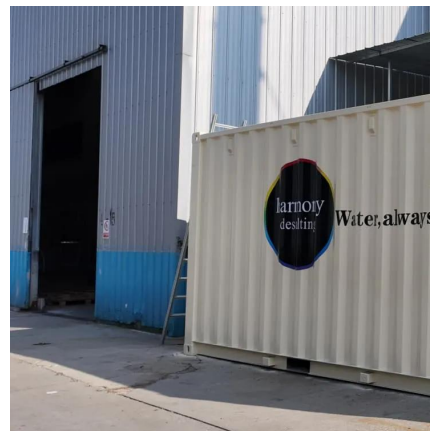


[Bifacial Solar Panels: What are They and Are They Worth It?](#)

Apr 14, 2024 · This stands in contrast to conventional solar panels which have opaque backsheets. These days, many bifacial panel designs incorporate double/dual glass at the rear ...

[What are bifacial solar modules and how do ...](#)

Apr 2, 2018 · The way a bifacial module is mounted depends on its type. A framed bifacial module might be easier to install than frameless, just ...



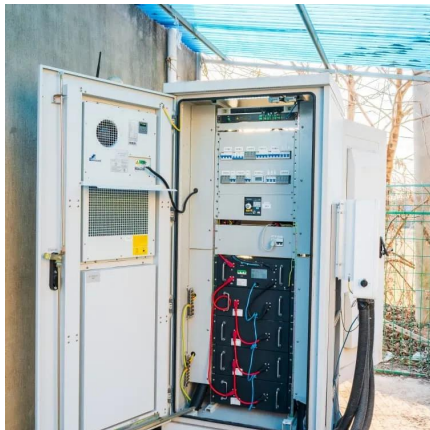
[Bifacial Solar Panels: What are They and Are ...](#)

Apr 14, 2024 · This stands in contrast to conventional solar panels which have opaque backsheets. These days, many bifacial panel designs ...



Bifacial Solar Modules , Maysun Solar

Single-glass bifacial modules are lightweight and suitable for rooftop installations, while double-glass bifacial modules provide greater ...

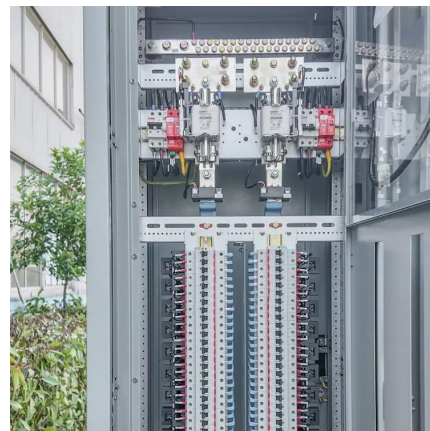


Bifacial PV Modules

Nov 23, 2023 · Monofacial modules use opaque back sheets while bifacial modules often incorporate transparent or translucent back sheets or dual-glass designs. Because they ...

Double the strengths, double the benefits

Feb 21, 2025 · Increased efficiency with bifacial technology Dual-sided energy Capture: Many double glass modules are bifacial, allowing them to harness sunlight from both sides. This can ...



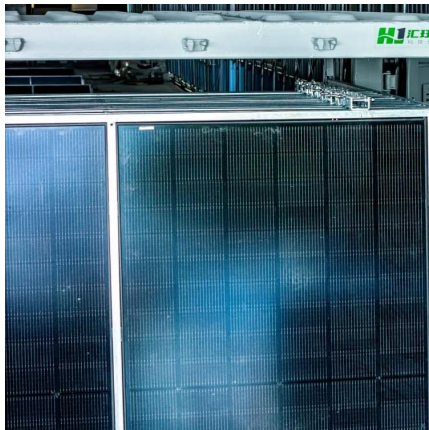
What are bifacial solar modules and how do they work?

Apr 2, 2018 · The way a bifacial module is mounted depends on its type. A framed bifacial module might be easier to install than frameless, just because traditional mounting and racking ...



Bifacial solar panels: What you need to know

Oct 11, 2024 · Learn about bifacial solar panels, an innovative double-sided panel technology that produces even more energy.

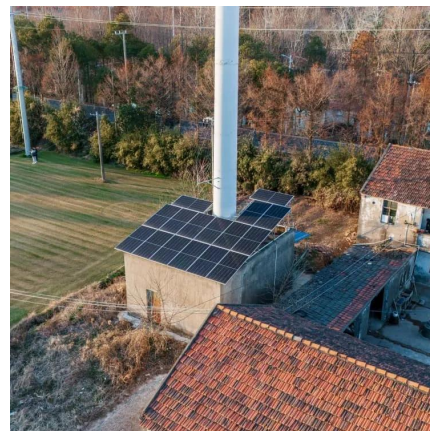


SoleFiori HJT bifacial double glass module

SoleFiori HJT bifacial double glass module 132 version-heterojunction 210mm cell
Power:695~740W Efficiency:23.18% Bifaciality rate: up to 95% Low attenuation: 1% ...

Dual-glass vs glass-backsheet: The winning ...

Oct 19, 2022 · Due to their better reliability, glass-glass bifacial configurations have a larger portion of the worldwide bifacial module market share. ...



Dual-glass vs glass-backsheet: The winning formula for bifacial modules

Oct 19, 2022 · Due to their better reliability, glass-glass bifacial configurations have a larger portion of the worldwide bifacial module market share. Glass shortages, weight concerns for ...



Contact Us

For technical specifications, project proposals, or partnership inquiries, please visit:
<https://www.meble-decorator.pl>

Scan QR Code for More Information



<https://www.meble-decorator.pl>