

Voltage source three-phase inverter





Overview

What is a three phase voltage source inverter?

Three-phase voltage source inverter The Three-Phase Voltage Source Inverter block implements a three-phase voltage source inverter that generates neutral voltage commands for a balanced three-phase load. Configure the voltage switching function for continuous vector modulation or inverter switch input signals.

What is a three-phase voltage source inverter block?

The Three-Phase Voltage Source Inverter block implements a three-phase voltage source inverter that generates neutral voltage commands for a balanced three-phase load. Configure the voltage switching function for continuous vector modulation or inverter switch input signals.

How does a 3 phase inverter work?

In a 3-phase inverter, three separate SPWM signals are generated for each phase, By comparing a high-frequency triangular waveform with three sinusoidal reference waveforms (one for each phase) to determine the pulse widths of the inverter's switching devices.

What is a three-phase voltage source inverter (VSI) with SPWM?

A three-phase Voltage Source Inverter (VSI) with SPWM (Sinusoidal Pulse Width Modulation) is a type of inverter that converts DC voltage into three-phase AC voltage with sinusoidal waveforms. It works by varying the pulse width of a high-frequency carrier signal according to the instantaneous amplitude of a reference sinusoidal waveform.



Voltage source three-phase inverter

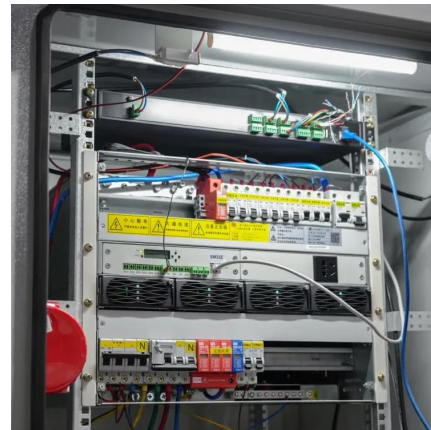


Three-Phase Voltage Source Inverter

The Three-Phase Voltage Source Inverter block implements a three-phase voltage source inverter that generates neutral voltage commands for a balanced three-phase load. Configure the ...

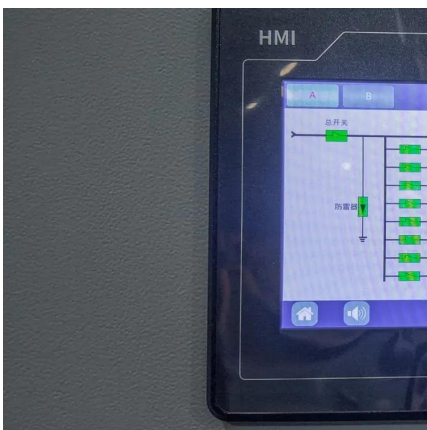
Three Phase Voltage Source Inverter with SPWM

Oct 27, 2024 · Introduction A three-phase Voltage Source Inverter (VSI) with SPWM (Sinusoidal Pulse Width Modulation) is a type of inverter that converts DC voltage into three-phase AC ...



Three-Phase Voltage Source Inverter

Feb 13, 2024 · 1 Overview This model shows a three-phase voltage source inverter (VSI). The VSI is an inverter circuit which creates AC current and voltage from a DC voltage source. ...



Three-Phase Voltage Source Inverter

The Three-Phase Voltage Source Inverter block implements a three-phase voltage source inverter that generates neutral voltage commands for a balanced three-phase load. Configure the ...



Three-Phase Voltage Source Inverter

The Three-Phase Voltage Source Inverter block implements a three-phase voltage source inverter that generates neutral voltage commands for a ...



Three-phase inverter reference design for 200-480VAC ...

May 11, 2022 · The three-phase inverter uses insulated gate bipolar transistor (IGBT) switches which have advantages of high input impedance as the gate is insulated, has a rapid response ...



Analysis of Three-Phase Voltage-Source Inverters

Mar 20, 2020 · 8.1 Introduction The voltage-source inverter (VSI) topology is a DC-AC converter that transforms a DC voltage into an AC voltage at its output. Analogously, the current-source ...





CHAPTER4

Dec 22, 2023 · 4.1 Introduction In this chapter the three-phase inverter and its functional operation are discussed. In order to realize the three-phase output from a circuit employing dc as the ...



Voltage Source Inverter : Construction, Phases & Its ...

A DC voltage source can be a battery or a dynamo, or a solar cell, a transistor used maybe an IGBT, BJT, MOSFET, GTO. VSI can be represented in 2 topologies, are single-phase and a 3 ...

Three-Phase Inverters

Likewise, other voltage patterns can easily be extrapolated and understood as shown for Van in Figure 22. Figure 22: Typical Phase to Neutral Voltages in Three-Phase Inverter Figure 23: ...



Voltage Source Inverter : Construction, Phases & Its ...

Likewise, other voltage patterns can easily be extrapolated and understood as shown for Van in Figure 22. Figure 22: Typical Phase to Neutral Voltages in Three-Phase Inverter Figure 23: ...





3-Phase Inverter

Feb 27, 2024 · Three Phase Inverter A three phase inverter is a device that converts dc source into three phase ac output . This conversion is achieved through a power semiconductor ...



Three Phase Voltage Source Inverter with ...

Oct 27, 2024 · Introduction A three-phase Voltage Source Inverter (VSI) with SPWM (Sinusoidal Pulse Width Modulation) is a type of inverter that ...

Contact Us

For technical specifications, project proposals, or partnership inquiries, please visit:
<https://www.meble-decorator.pl>

Scan QR Code for More Information



<https://www.meble-decorator.pl>