

Use 12 volt 12 amp inverter 500w





Overview

What is the working efficiency of 12V 500W inverter?

The working efficiency of 12V 500W inverter can be reached 90%. 500W pure sine wave inverter DC 12V to AC 240V/220V/110V/230V, 50/60Hz output frequency, 12 volt 500 watt pure sine inverter provides the safest option for circuit board power supply.

How many volts can a 500 watt inverter run?

Pure sine wave inverter 12V to 240V for sale, output frequency 50Hz or 60Hz for selection, output AC 110V, 100V, 220V, 230V and 240V are optional. 500 watt pure sine wave inverter allows to run the home with 12 volt DC battery input and change to 240 volt AC output. The working efficiency of 12V 500W inverter can be reached 90%.

How long does a 12V battery last with a 500W inverter?

Here's a chart illustrating the estimated backup time for various 12V battery sizes when using a 500W inverter. 12v battery will last anywhere between 40 minutes to 7 hours running a 500-watt inverter. The exact time will depend on the size and type of yours.

What is a 500 watt sine wave inverter?

500W pure sine wave inverter DC 12V to AC 240V/220V/110V/230V, 50/60Hz output frequency, 12 volt 500 watt pure sine inverter provides the safest option for circuit board power supply. Unlike modified sine wave inverter that produces a stepped or blocky waveform, pure sine wave inverter generates a smooth waveform similar to utility grid power.



Use 12 volt 12 amp inverter 500w



[500 Watts Inverter Circuit: 12 Volt to 220 Volt](#)

Apr 25, 2025 · 500 watts inverter circuit, PCB Layout and transformer details are given here. This is a high frequency inverter using SG3525N IC.

[How Long Will a 12v Battery Last With 500w Inverter?](#)

Jun 8, 2023 · How long a 12v battery last with 500W inverter. In short, 12v battery will last between 40 minutes to 7 hours running a 500-watt inverter.



[12V 500 Watt Pure Sine Wave Inverter](#)

Pure sine wave inverter 12V to 240V for sale, output frequency 50Hz or 60Hz for selection, output AC 110V, 100V, 220V, 230V and 240V are optional. 500 watt pure sine wave inverter allows to ...

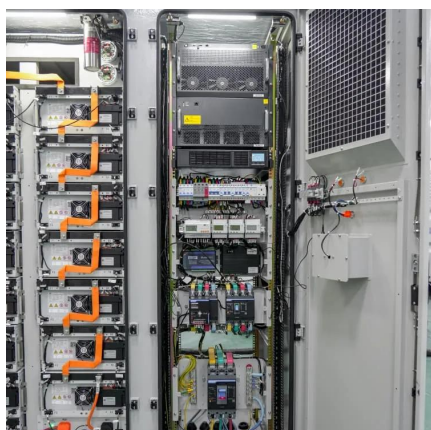
[Simple 500w inverter circuit diagram for 12v ...](#)

An inverter is a device that converts low voltage DC power, such as the 12 volts from a car battery, into high voltage AC power, such as the 220 volts ...



500W Modified Sine Wave Inverter - 12V DC to 110V/220V ...

Nov 1, 2025 · This 500-watt, 12-volt modified sine wave power inverter from Junchipower converts battery-stored DC power into AC power that can be used to run almost any small household ...



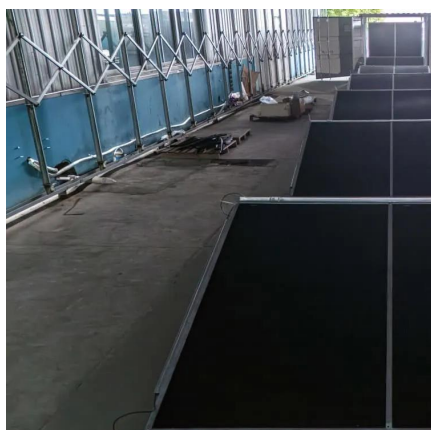
Victron 12VDC 500W True Sine Wave Inveter

Power up your devices with the Victron Multiplus 500W 12V inverter. This compact powerhouse provides true sine wave power and adaptive charge ...



How to Accurately Calculate the Current Draw for a 500W Inverter

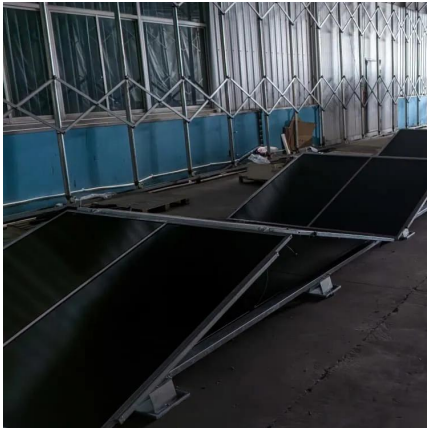
Aug 12, 2024 · To calculate current draw for a 500W inverter on a 12V system, use the formula: Current (A) = Power (W) / Voltage (V). Thus, Current = 500W / 12V = approximately 41.67A ...





[Simple 500w inverter circuit diagram for 12v to 220v ...](#)

An inverter is a device that converts low voltage DC power, such as the 12 volts from a car battery, into high voltage AC power, such as the 220 volts used in most households. In this ...



[12V-220V 500 Watt inverter DIY Homemade](#)

Arduino based 12V-220V 500 Watt inverter with feedback systems. Over under voltage, battery low level protection and battery level indicator.

[Best 12 Volt Pure Sine Wave Inverter ...](#)

Aug 4, 2025 · Its safety features--over-voltage, under-voltage, thermal, overload, and reverse polarity protections--are thorough. Compared to ...



[Victron 12VDC 500W True Sine Wave Inverter](#)

Power up your devices with the Victron Multiplus 500W 12V inverter. This compact powerhouse provides true sine wave power and adaptive charge technology.



500W 12V to 220V Inverter

500W 12V to 220V Inverter This is a 500W DC-to-AC inverter circuit diagram which produces an AC output at line frequency and voltage. 12VDC to 220V 50Hz inverter circuit will power 220V ...



500 Watts Inverter Circuit: 12 Volt to 220 Volt

Jun 8, 2023 · How long a 12v battery last with 500W inverter. In short, 12v battery will last between 40 minutes to 7 hours running a 500-watt inverter.

Best 12 Volt Pure Sine Wave Inverter [Updated: December ...

Aug 4, 2025 · Its safety features--over-voltage, under-voltage, thermal, overload, and reverse polarity protections--are thorough. Compared to smaller models, the 500W offers more ...



12V-220V 500 Watt inverter DIY Homemade

Arduino based 12V-220V 500 Watt inverter with feedback systems. Over under voltage, battery low level protection and battery level indicator.



Contact Us

For technical specifications, project proposals, or partnership inquiries, please visit:
<https://www.meble-decorator.pl>

Scan QR Code for More Information



<https://www.meble-decorator.pl>