

Tokyo Base Station Battery





Overview

Why does Tokyo need a battery swapping network?

Because batteries charge gradually at the station rather than drawing high loads from the grid, swapping also reduces strain on Tokyo's energy infrastructure while ensuring a steady supply of power. This expansion of Ample's swapping network will provide additional coverage and capacity, with each station able to support over 100 vehicles.

Can a battery swap be a success in Japan?

Ample entered the Japanese market in early 2024, launching battery swapping in Kyoto with Mitsubishi Fuso Truck and Bus Corporation (MFTBC) and ENEOS Holdings. The deployment showed how modular battery swapping keeps fleets moving, eliminates long charging times, and eases grid demand. Now, that success is coming to Tokyo.

Why is Tokyo expanding its EV infrastructure with citywide battery swapping?

For electrification to work at scale, energy solutions must be fast, reliable, and space-efficient. That's why Tokyo is expanding its EV infrastructure with citywide battery swapping.



Tokyo Base Station Battery



[Ample to Establish Battery Swapping Network ...](#)

Mar 25, 2025 · US-based battery swap startup Ample announced plans to deploy a network of battery swapping stations in Tokyo, partnering with ...

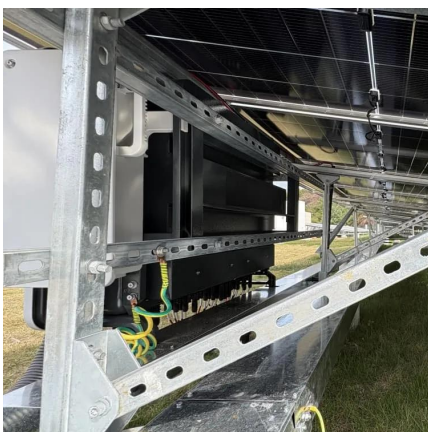
[PowerX to Supply Battery Energy Storage Systems to Tokyo ...](#)

Sep 2, 2025 · TOKYO, JAPAN -- PowerX, Inc. (Head Office: Tamano City, Okayama Prefecture; Director, President and CEO: Masahiro Ito) announced that it has received an order for 24 ...



[Ample to deploy battery swapping stations in Tokyo](#)

Mar 21, 2025 · Ample will deploy a network of swapping stations in Tokyo, with an initial focus on supporting commercial fleets in the logistics sector. The initiative, backed by the Tokyo ...



[PowerX to Supply Battery Energy Storage ...](#)

Sep 2, 2025 · TOKYO, JAPAN -- PowerX, Inc. (Head Office: Tamano City, Okayama Prefecture; Director, President and CEO: Masahiro Ito) ...



[International Consortium Rolls Out Major EV Battery ...](#)

Jun 5, 2025 · A foundational goal of the effort is to minimize vehicle downtime during charging. The Tokyo consortium targets battery swapping times of just 5 minutes. Unlike conventional ...



[Ample is Coming to Tokyo: A Battery Swapping ...](#)

Mar 19, 2025 · Battery swapping solves this by allowing drivers to replace a depleted battery with a fully charged one in just five minutes. Because batteries charge gradually at the station ...



[Japan's station batteries , Huijue Group E-Site](#)

How Telecom Operators Use Base Station Batteries to Reduce Energy Costs & Carbon Footprint Did you know global telecom networks consume 200-350 terawatt-hours annually - equivalent ...





[NGK's Zinc Rechargeable Battery Cell Adopted for KDDI's](#)

Apr 11, 2024 · NGK INSULATORS, LTD.
(hereinafter "NGK") based in Nagoya, Japan, has started operating a zinc rechargeable battery that it is currently developing, after the cell was ...



[NGK's Zinc Rechargeable Battery Cell ...](#)

Apr 11, 2024 · NGK INSULATORS, LTD.
(hereinafter "NGK") based in Nagoya, Japan, has started operating a zinc rechargeable battery that it ...



[Ample to Establish Battery Swapping Network in Tokyo](#)

Mar 25, 2025 · US-based battery swap startup Ample announced plans to deploy a network of battery swapping stations in Tokyo, partnering with Mitsubishi Fuso Truck and Bus ...



[Ample Brings EV Battery Swapping to Tokyo](#)

Mar 20, 2025 · Ample, a leader in battery swapping technology, is set to deploy a network of swapping stations in Tokyo, with cooperation from ...



[251212_Tokyo Century to Invest in Self-Developed Extra](#)

4 days ago · This swift decision to invest in these four large-scale projects was realized by leveraging Tokyo Century's strengths: its track record and accumulated expertise as a pioneer

...



[Ample Brings EV Battery Swapping to Tokyo](#)

Mar 20, 2025 · Ample, a leader in battery swapping technology, is set to deploy a network of swapping stations in Tokyo, with cooperation from Mitsubishi Fuso Truck and

[Tokyo Century to build four additional wholly-owned extra ...](#)

3 days ago · Tokyo Century will invest in four wholly-owned extra high-voltage grid-scale battery storage projects totaling 101MW/386.3MWh, the company announced on December 12, 2025. ...



Contact Us

For technical specifications, project proposals, or partnership inquiries, please visit:
<https://www.meble-decorator.pl>



Scan QR Code for More Information



<https://www.meble-decorator.pl>