

The outdoor part of the base station does not include





Overview

What is a base station in a telecommunications network?

A base station is a critical component in a telecommunications network. A fixed transceiver that acts as the central communication hub for one or more wireless mobile client devices. In the context of cellular networks, it facilitates wireless communication between mobile devices and the core network.

What are the components of a base station?

The base station will have one or more RF antennas installed to transmit and receive RF signals from other devices. The block diagram of a base station typically includes the following key components: Baseband Processor: The baseband processor too deals with different communication protocols and interfaces with mobile network infrastructure.

Why are base stations important?

Base stations are the backbone of modern telecommunications networks, providing the essential infrastructure for wireless communication. They enable mobile devices to connect to the network, manage traffic efficiently, and ensure robust and reliable connectivity across wide areas.

Why are base stations an inevitability?

These types of objects are an inevitability since they serve the purpose of providing signal transfer for data and voice between mobile mobiles. The idea of base stations is anchored in their function to provide coverage, capacity, and connectivity, hence allowing for extending the working capabilities of mobile phones and other radio gear.



The outdoor part of the base station does not include



[What is a Base Station in Telecommunications?](#)

What is a Base Station? A base station is a critical component in a telecommunications network. A fixed transceiver that acts as the central communication hub for one or more wireless mobile ...

[What Is a Base Station? Definition and How It Works](#)

Oct 10, 2025 · The internal components of a base station include an antenna system, transceiver units, and control equipment. Antennas are mounted at height to ensure adequate coverage.



[Outdoor components of the base station.](#)

Download scientific diagram , Outdoor components of the base station. from publication: Large Scale Experimental Trial of 5G Mobile Communication Systems--TDD Massive MIMO with ...

[Base stations and networks](#)

Base Stations Enable Mobile Communications
Antennas Are Placed in Various Locations
More Mobile Devices Means More Base Stations
Base Station Output Power Is Low
Exposure Limits Are Set by Independent



Organizations Exposure Levels Are Much Lower Than The Limits Public Access Is Restricted Where Needed No Adverse Health Effects According to The Who The antenna output power level is typically between 10 and 100 watts for an outdoor base station. Television transmitters, by comparison, usually have a thousand times higher output power than outdoor base stations. Antennas mounted indoors have about the same power as mobile phones. See more on ericsson Sanny Telecom



What Is A Base Station? - Sanny Telecom

Apr 22, 2024 · A base station is an integral component of wireless communication networks, serving as a central point that manages the transmission and reception of signals between ...

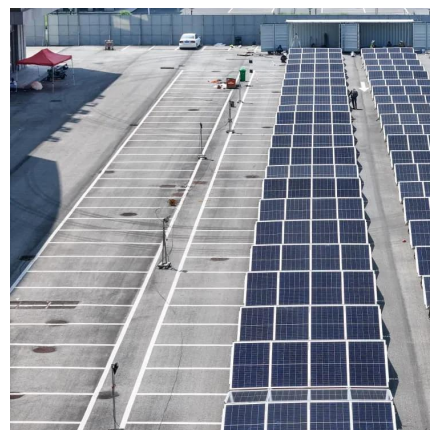


[Base stations and networks](#)

5 days ago · Base station output power is relatively low The antenna output power level is typically between 20 watts and a few hundred watts for an outdoor base station. Television ...

Base Stations

Jul 23, 2025 · The present-day tele-space is incomplete without the base stations as these constitute an important part of the modern-day scheme of wireless communications. They are ...



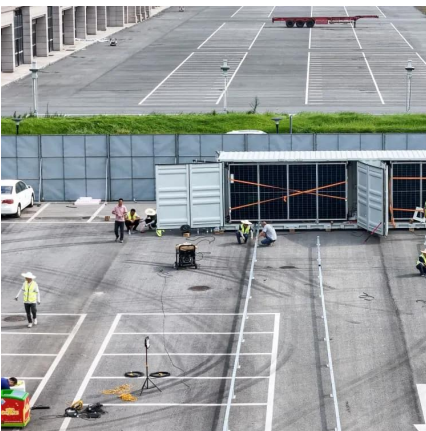
[What Is a Base Station? Exploring the Core of 5G Networks ...](#)



Aug 19, 2025 · Base stations are the core of mobile communication, and with the rise of 5G, thermal and energy challenges are increasing. This article explains the definition, structure, ...

[Understand Cellphone Basestation Technology » Electronics ...](#)

Understand Cellphone Basestation Technology
Understand the major elements within a cellphone or cellular network base station, what each element does and how the technology is evolving ...



[Understand Cellphone Basestation ...](#)

Understand Cellphone Basestation Technology
Understand the major elements within a cellphone or cellular network base station, what each ...

[What is a Base Station in ...](#)

What is a Base Station? A base station is a critical component in a telecommunications network. A fixed transceiver that acts as the central ...



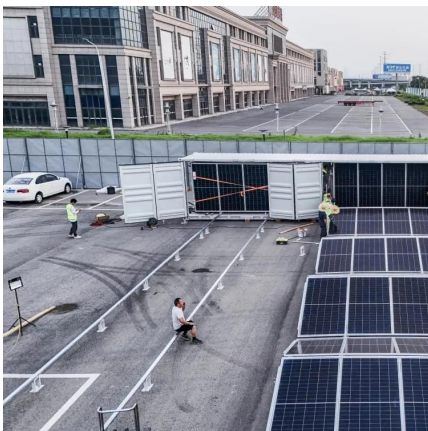
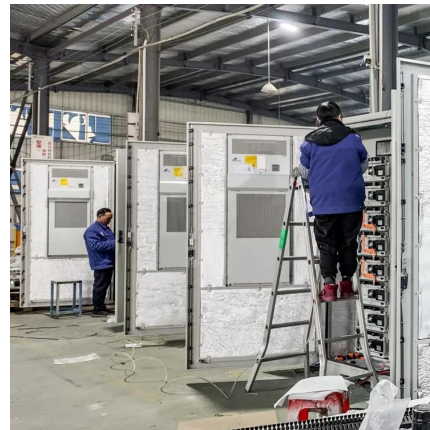


Base stations

Personal exposure to RF EMF fields from base stations is different to that from mobile phones. RF EMF exposure from mobile phones is mostly limited in time and is largest in the head or in ...

Outdoor components of the base station.

Download scientific diagram , Outdoor components of the base station. from publication: Large Scale Experimental Trial of 5G Mobile Communication ...

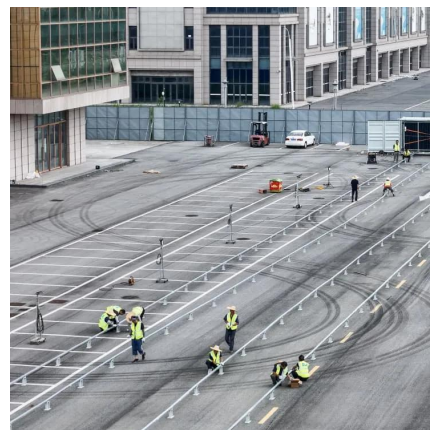


What Is A Base Station?

Apr 22, 2024 · A base station is an integral component of wireless communication networks, serving as a central point that manages the transmission and reception of signals between ...

1. What Is a Base Station and What Are Its Core Components?

Nov 28, 2025 · A mobile communication base station is the radio facility that covers a specific area and enables data transmission between mobile phones and the core network. It is the ...





Contact Us

For technical specifications, project proposals, or partnership inquiries, please visit:
<https://www.meble-decorator.pl>

Scan QR Code for More Information



<https://www.meble-decorator.pl>