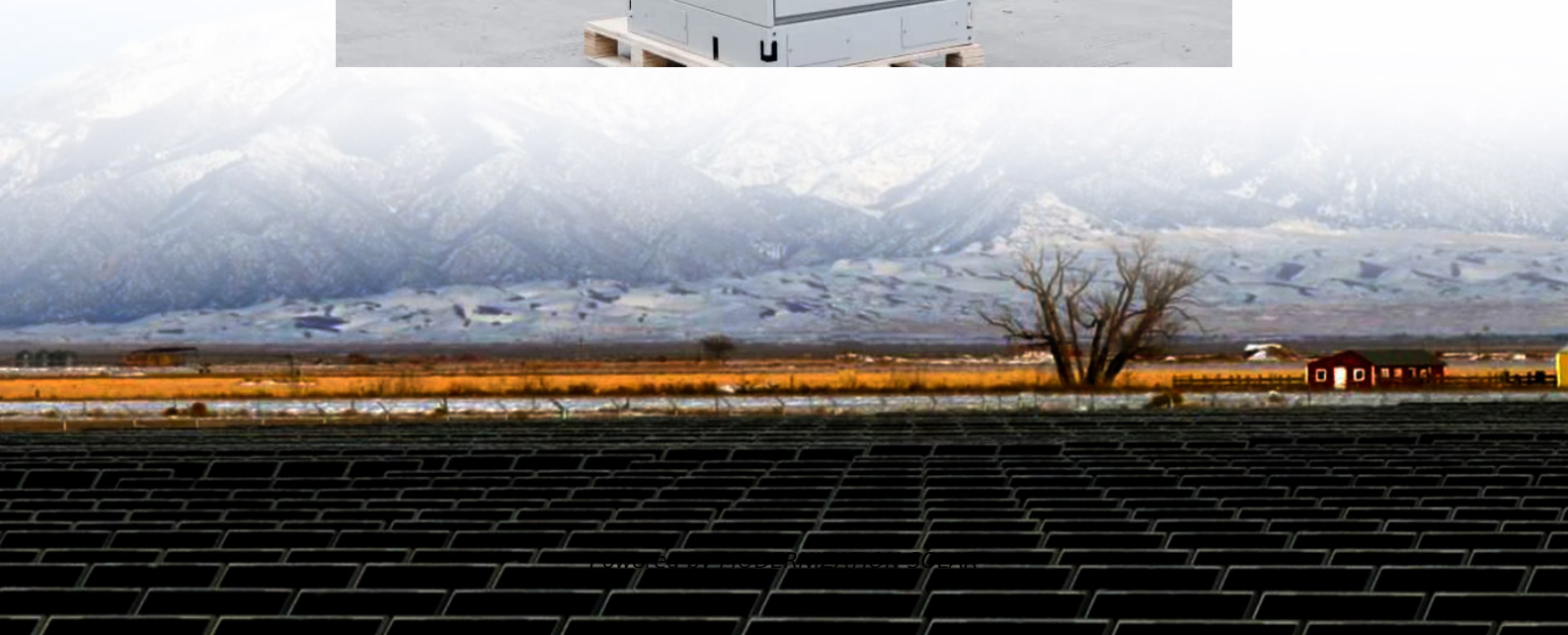


Single-phase full-bridge square wave inverter





Overview

A single-phase full bridge inverter is a switching device that generates a square wave AC voltage in the output on the application of DC voltage in the input by adjusting the switch ON and OFF. What is a full bridge single phase inverter?

A full bridge single phase inverter is a switching device that generates a square wave AC output voltage on the application of DC input by adjusting the switch turning ON and OFF based on the appropriate switching sequence, where the output voltage generated is of the form $+V_{dc}$, $-V_{dc}$, Or 0.

What is a full bridge inverter?

A single-phase full bridge inverter is a switching device that generates a square wave AC voltage in the output on the application of DC voltage in the input by adjusting the switch ON and OFF. The voltage in the output of a full bridge inverter is either $-V_{DC}$, $+V_{DC}$ or 0. According to classification, inverters are five types.

How to control the output frequency of a single phase full bridge inverter?

The output frequency can be controlled by controlling the turn ON and turn OFF time of the thyristors. The power circuit of a single phase full bridge inverter comprises of four thyristors T1 to T4, four diodes D1 to D1 and a two wire DC input power source V_s .

What is a single phase inverter?

Inverter Circuit: A circuit which is used to convert the specified voltage or frequency range with the combining of converter and inverter, it consist of electric switches such as thyristors and transistors. Single phase inverters are classified into two types. They are : Basically there are three types of waveform of the single phase inverter:



Single-phase full-bridge square wave inverter

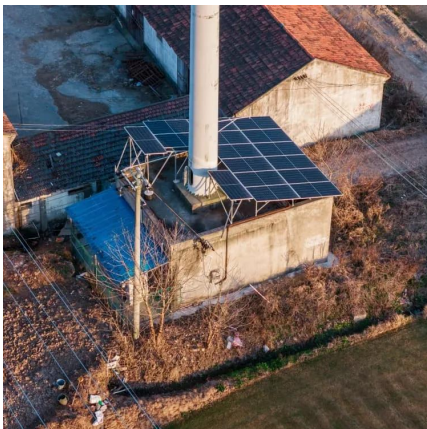


[Single Phase Full Bridge Inverter \(Square ...](#)

Jun 12, 2021 · Single Phase Full Bridge Inverter (Square Wave Output) Circuit Diagram of Single Phase Full Bridge Inverter (Square Wave ...

[Single Phase Full Bridge Inverter - Resistive Load](#)

Jul 12, 2021 · A full bridge single phase inverter is a switching device that generates a square wave AC output voltage on the application of DC input by adjusting the switch turning ON and ...



[Single Phase Full Bridge Inverter](#)

Jul 14, 2021 · A full bridge single phase inverter is a switching device that generates a square wave AC output voltage on the application of DC ...

[Experiment: Single-Phase Full-Bridge sinewave Inverter](#)

Nov 7, 2023 · To overcome the disadvantages of the square-wave PWM, another modulation technique is used for controlling the full-bridge inverter. This method, which called the ...



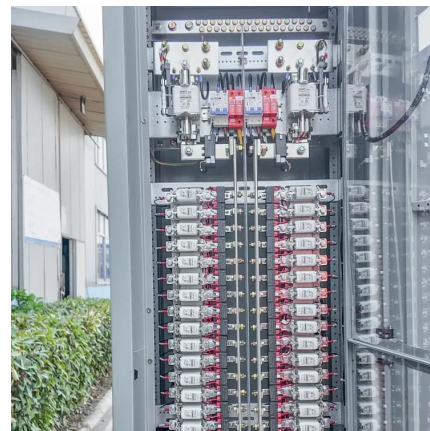
DC AC Converter (PE 1ph VSI 3.sqproj)

Feb 15, 2020 · DC AC Converter (PE 1ph VSI 3.sqproj) Question: A single-phase full-bridge voltage source inverter is fed from a DC source such that the fundamental RMS output voltage ...



Half Bridge Inverter : Circuit, Advantages.

The output voltage waveform of a single-phase half-bridge inverter with RL load is shown in the below figure. Output Voltage Waveform of Single ...



Single-phase full-bridge inverter

Feb 15, 2023 · Principle of Operation Single-phase full-bridge inverters are used, as already mentioned, to transform direct current into alternating current. In this circuit, the electronic ...





Voltage Fed Full Bridge DC-DC & DC-AC Converter High ...

The full bridge (S1 S4) generates a high-frequency square-wave signal with 40 - 50 kHz, which is transmitted via the HF transformer (Tr1). The bridge rectifiers (D1 D4) convert the square ...



Single Phase Full Bridge Inverter Explained

Aug 3, 2020 · This article explains Single Phase Full Bridge Inverter, circuit diagram, various relevant waveforms & comparison between half and full bridge inverters.

How to Design and Implement a Single-phase ...

In this Instructable, we have implemented a Single-Phase Inverter using Square Wave and Quasi Square Wave control strategies using ...



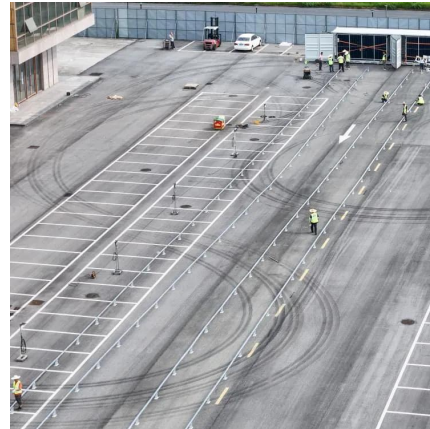
Single-phase full-bridge inverter

Feb 15, 2023 · Principle of Operation Single-phase full-bridge inverters are used, as already mentioned, to transform direct current into alternating ...



Lesson No

Feb 4, 2019 · Explain the operating principle of a single-phase square wave inverter. Compare the performance of single-phase half-bridge and full-bridge inverters. Do harmonic analysis of load ...

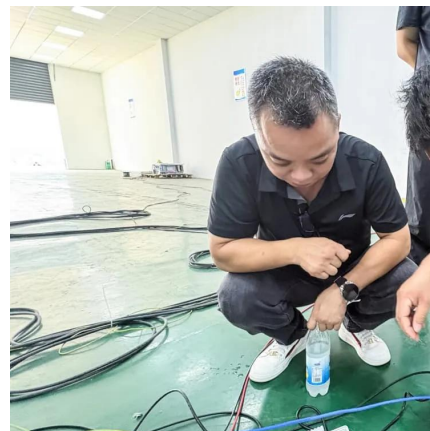


Single Phase Full Bridge Inverter (Square Wave Output)

Jun 12, 2021 · Single Phase Full Bridge Inverter (Square Wave Output) Circuit Diagram of Single Phase Full Bridge Inverter (Square Wave Output) : A single phase bridge inverter is shown in ...

Single Phase Full Bridge Inverter

A single-phase square wave type voltage source inverter produces square shaped output voltage for a single-phase load. Such inverters have very ...



Single Phase Full Bridge Inverter - Resistive ...

Jul 12, 2021 · A full bridge single phase inverter is a switching device that generates a square wave AC output voltage on the application of DC ...



Single Phase Full Bridge Inverter Explained

Circuit Diagram of Single Phase Full Bridge Inverter
Working Principle of Single Phase Full Bridge Inverter
Comparison Between Half & Full Bridge Inverters
The working principle of single phase full bridge inverter is based on the sequential triggering of thyristors placed diagonally opposite. This means, for half of time period, thyristors T3 & T4 will be triggered while for the remaining half of time period, T1 & T2 will be triggered. Only two thyristors are turned ON in half of the time period. Car See more on electricalbaba Electrical Technology



Full Bridge Inverter - Circuit, Operation, ...

2 days ago · Full bridge inverter is a topology of H-bridge inverter used for converting DC power into AC power. The components required for ...



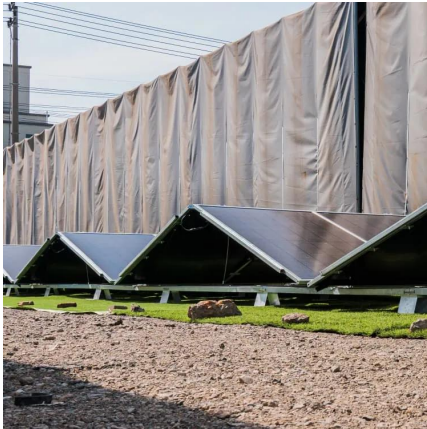
Single Phase Full Bridge Inverter

Jul 10, 2021 · In this topic, you study Single Phase Full Bridge Inverter - Circuit Diagram, Working & Waveforms. The arrangement of the inverter ...

Single Phase Full Bridge Inverter

A single-phase square wave type voltage source inverter produces square shaped output voltage for a single-phase load. Such inverters have very simple control logic and the power switches ...





Single Phase Inverter

Jul 23, 2025 · Half bridge inverter Full bridge inverter Basically there are three types of waveform of the single phase inverter: Square wave ...

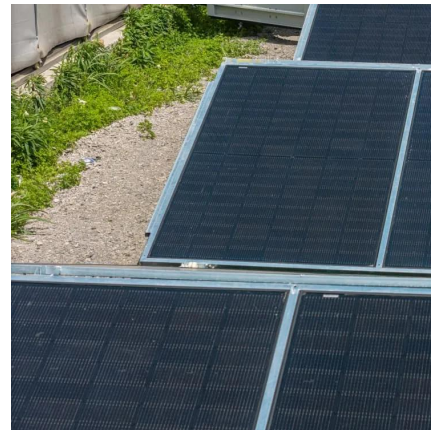


[Full Bridge Inverter - Circuit, Operation, Waveforms & Uses](#)

2 days ago · Full bridge inverter is a topology of H-bridge inverter used for converting DC power into AC power. The components required for conversion are two times more than that used in ...

Single Phase Inverter

Jul 23, 2025 · Half bridge inverter Full bridge inverter Basically there are three types of waveform of the single phase inverter: Square wave inverter Modified Sine wave inverter Pure sine wave ...



CHAPTER 2

Dec 22, 2023 · bridge or full-bridge configuration. The single-phase units can be joined to have three-phase or multiphase topologies. Some industrial applications of inverters are for ...





Power Electronics

May 15, 2025 · Example: The full-bridge inverter has a switching sequence that produces a square wave voltage across a series RL load. The switching frequency is 60 Hz, $V_s=100$ V, ...

1Ph_FW_Inverter_R-L_Load -

Jan 19, 2022 · Single phase full bridge inverter consists of four SCRs and four diodes. For Full bridge inverter when T1, T2 conduct, load voltage is V_s and T3, T4 conduct load voltage is $-V_s$.

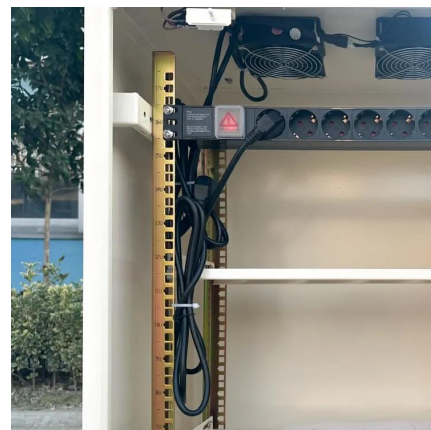


Single Phase Full Bridge Inverter

Jul 10, 2021 · In this topic, you study Single Phase Full Bridge Inverter - Circuit Diagram, Working & Waveforms. The arrangement of the inverter consists of four transistor,

Full Bridge Inverter: Circuit, Waveforms, Working And ...

Jun 2, 2025 · A single-phase full bridge inverter is a switching device that generates a square wave AC voltage in the output on the application of DC voltage in the input by adjusting the ...





[Single Phase Half Bridge and Full Bridge](#)

Nov 22, 2020 · There are mainly two types of single-phase inverter: Half Bridge Inverter and Full Bridge Inverter. Here we will study how these ...

Contact Us

For technical specifications, project proposals, or partnership inquiries, please visit:
<https://www.meble-decorator.pl>

Scan QR Code for More Information



<https://www.meble-decorator.pl>