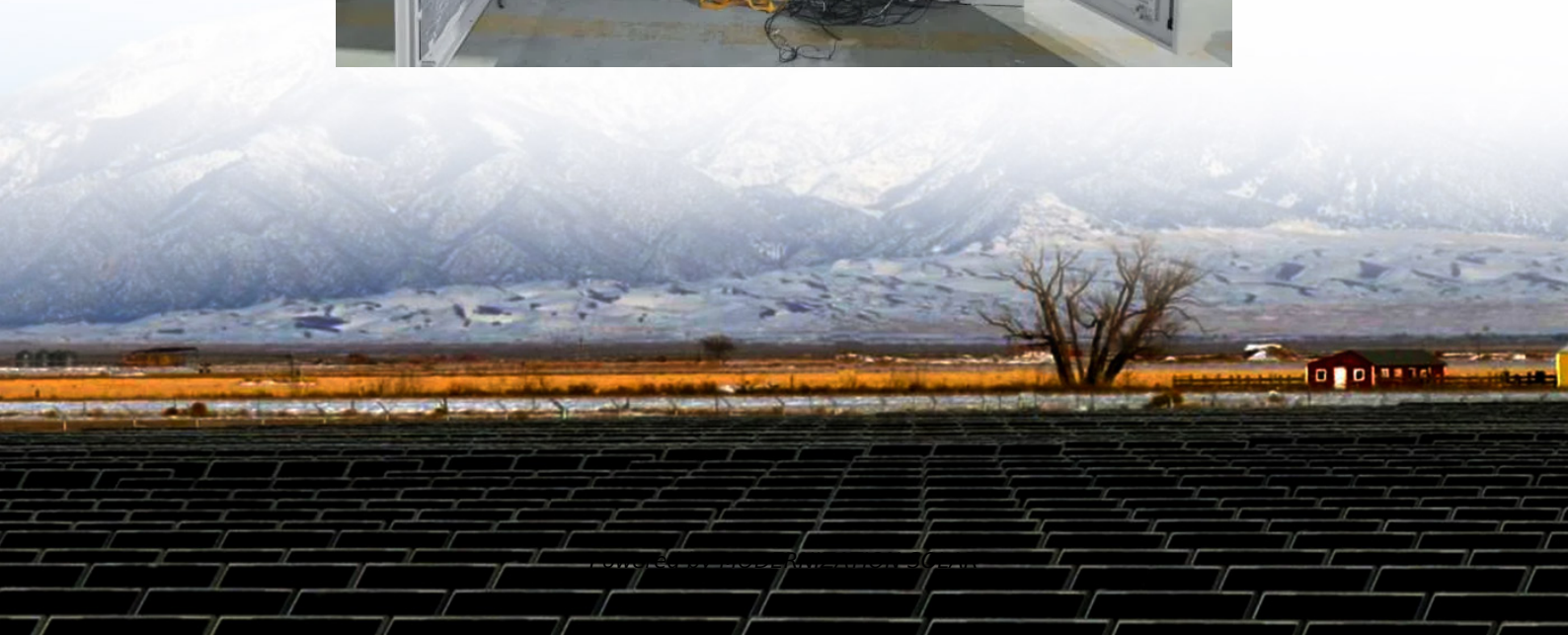


Outdoor signal base station design requirements





Overview

How high should a base station antenna be?

Per ITU-R P.1410 recommendations, base station antenna heights typically range between 15-60 meters. Urban deployments favor 25-35m, rural coverage requires 40-55m, while 5G mmWave systems operate efficiently at 15-25m. Critical factors include propagation models, terrain, and frequency bands.

How do outdoor base stations work?

Outdoor base stations integrate all essential systems into a single Integrated Cabinet, designed to endure harsh conditions like direct sunlight, rain, and extreme temperatures. These units protect the equipment while ensuring efficient functionality. Towers are crucial for mounting antennas at high elevations, ensuring wide signal reach.

How to choose a base station?

The selection of base stations should comprehensively consider various indicators, such as sharing rate, planning accuracy rate, and planning depth. This is a multi-objective planning problem.

Why is base station site selection important?

Especially with the development and promotion of national 5G technology, the construction of 5G base stations is an important part of the future communication infrastructure. Therefore, base station site selection will become an important work of base station construction.



Outdoor signal base station design requirements



[Complete Guide to 5G Base Station ...](#)

Nov 17, 2024 · Explore how 5G base stations are built--from site planning and cabinet installation to power systems and cooling solutions. Learn the ...

[Wireless Survey And Design Of Outdoor Base Stations](#)

The design and layout of the base station is the primary work of network planning, including the content is to determine the frequency multiplexing mode according to the width of the ...



TS 138 113

Aug 5, 2024 · The present document specifies the applicable requirements, procedures, test conditions, performance assessment and performance criteria for NR base stations and ...

[Optimizing the ultra-dense 5G base stations in urban outdoor ...](#)

Dec 1, 2020 · The penetration loss of 2G/3G/4G signals in urban areas is far lower than that of 5G signals (Maccartney et al., 2013). Consequently, the location optimization models for previous ...



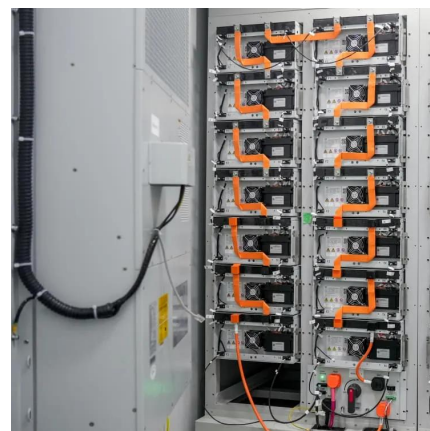
MultiTech outdoor BS422

The DAMM MultiTech Outdoor Base Station BS422 delivers maximum uptime for any radio network. It combines all the power and functionality ...



Base Station Class

17.6 Overview of RF Requirements for LTE The RF requirements define the receiver and transmitter RF characteristics of a base station or UE. The base station is the physical node ...



[Your Guide for Outdoor Wireless Network](#)

...

Mar 24, 2017 · Whether you're at a football stadium, college campus, or public park, within five minutes of your visit you're probably checking for ...





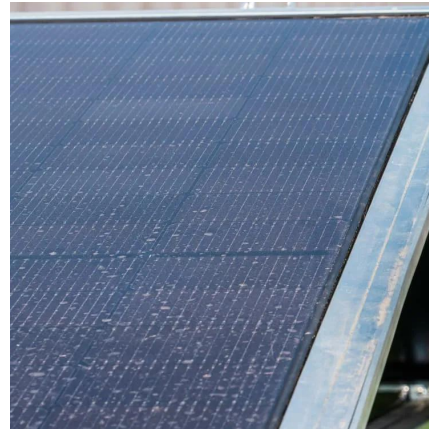
Design Requirements for ESTEL Integrated Outdoor Communication Base

Mar 26, 2025 · Explore the key design requirements for outdoor telecom cabinets, including durability, security, thermal management, and compliance with industry standards.



Base Station Antenna Height Recommendations Explained

By Lxelec / March 17, 2025 / 5G base station antenna, 5G tower height regulations, base station antenna height requirements, RF coverage planning Share Great Content Per ITU-R P.1410 ...



Base Station Antenna: A Comprehensive ...

Base station antennas play a critical role in modern telecommunications. They are essential components of wireless communication networks, ...



arXiv:2301.04229v1 [eess.SY] 10 Jan 2023 of the ...

Jan 12, 2023 · Based on outdoor signal measurement studies under the pedestrian blockage, we show that there is frequently a ground reflection from hard surfaces, and propose a protocol ...



Technical Requirements and Market Prospects of 5G Base Station ...

Jan 17, 2025 · 5G networks use a broader range of spectrum resources, particularly the millimeter-wave bands (24 GHz and above). Base station chips must be capable of efficiently ...



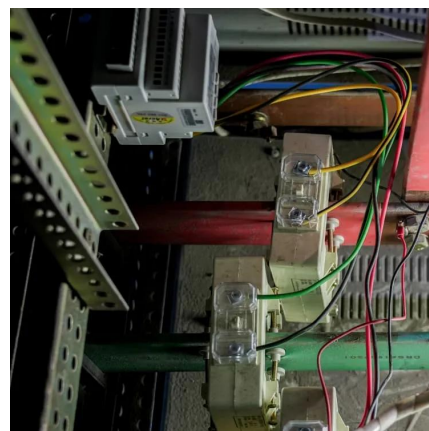
[A Review on 5G Sub-6 GHz Base Station](#)

...

Oct 16, 2000 · Modern wireless networks such as 5G require multiband MIMO-supported Base Station Antennas.

[Complete Guide to 5G Base Station Construction , Key Steps, ...](#)

Nov 17, 2024 · Explore how 5G base stations are built--from site planning and cabinet installation to power systems and cooling solutions. Learn the essential components, technologies, and ...



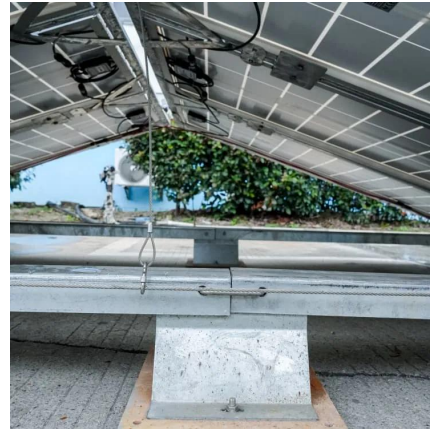
[Outdoor signal base station design requirements](#)

What are the different types of base stations?
Some basic types of base stations are as follows:
Macro-base stations are tall towers ranging from 50 to 200 feet in height, placed at strategic ...



Base Station Antenna

The levels of public exposure to electromagnetic energy from any base station vary depending on antenna type, location and distance from the base station. The base station antennas are most ...



[Outdoor communication base station equipment ...](#)

Nov 4, 2025 · Power Requirements: Base stations operate on 120V AC power rather than 12V DC, requiring either built-in power supplies or separate AC-to-DC converters. Size and ...

[Design Requirements for ESTEL Integrated ...](#)

Mar 26, 2025 · Explore the key design requirements for outdoor telecom cabinets, including durability, security, thermal management, and ...



[Research and Implementation of 5G Base Station ...](#)

Oct 28, 2023 · Guoqing Chen, Xin Wang, and Guo Yang Abstract The application requirements of 5G have reached a new height, and the location of base stations is an important factor ...



Base Station Antenna Height ...

By Lxelec / March 17, 2025 / 5G base station antenna, 5G tower height regulations, base station antenna height requirements, RF coverage ...

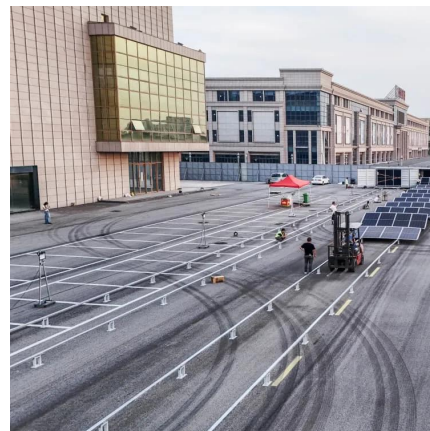


Outdoor Wi-Fi Dual-band Dual-polarized Base Station ...

the dual-frequency dual-polarized patch array antenna for outdoor Wi-Fi base stations. High isolation and low cross polarization are obtained in the operating frequency band.

Antenna Design Requirements , SpringerLink

Jan 3, 2022 · Antenna design requirements for a typical pen-drive sized wireless dongle is also illustrated, followed by design requirements of commercially available wearable devices. The ...



Contact Us

For technical specifications, project proposals, or partnership inquiries, please visit:
<https://www.meble-decorator.pl>



Scan QR Code for More Information



<https://www.meble-decorator.pl>