

Outdoor base station safety production case





Overview

Mobile phones and other mobile devices require a network of base stations in order to function. The base station antennas transmit and receive RF (radio frequency) signals, or radio waves, to and from.

How much exposure can a radio base station have?

On the ground, in houses, and other places where people reside, the exposure levels from radio base stations are normally below 1 percent of the limits. Only in the close vicinity of the antennas can the exposure limits sometimes be exceeded.

Can unauthorized people access a base station?

The antennas are installed in such a way that unauthorized people do not have access to the area where the limits may be exceeded. This holds true whether the base station is part of a 2G (GSM), a 3G, a 4G (LTE) or a 5G network.

Where is a base station antenna located?

The base station antennas are usually placed on rooftops, in masts or on building walls. Antennas are sometimes also installed in shopping malls, airports, offices, and other places with many mobile phone users. Indoor antennas are usually placed on walls or on ceilings. Each base station can only serve a limited number of mobile devices at a time.

How many mobile devices can a base station serve?

Each base station can only serve a limited number of mobile devices at a time. As the number of mobile devices in a community grows, more base stations are needed. For that reason, more antennas are needed in such crowded locations as shopping malls where there are many mobile phone users.



Outdoor base station safety production case



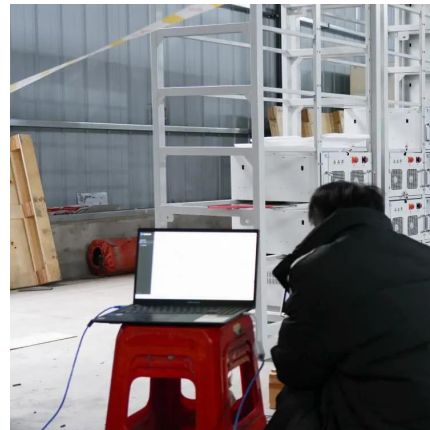
(PDF) Research and application of box type substation operation safety

May 1, 2023 · This paper proposes a box type substation operation safety management and control system based on GIM modeling technology and UWB positioning technology to ...

[Station Safety-designed for wireless base](#)

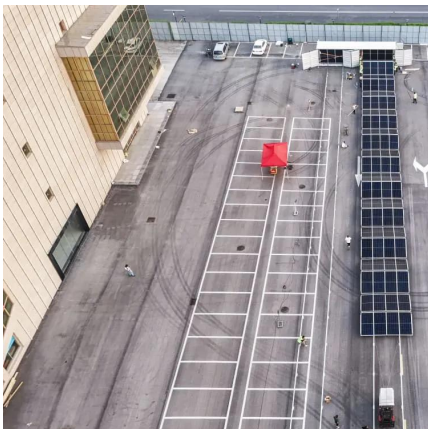
...

4 days ago · ZTE's Station Safety solution is designed for wireless base stations and substations. Deploy intelligent cameras, audible and visual ...



[Smart Agriculture and Base Station Applications](#)

Case Details In outdoor and semi-industrial environments such as smart agriculture and communication base stations, real-time environmental monitoring plays a crucial role in ...



[Outdoor Base Station Cabinet](#)

An outdoor base station cabinet acts as the core protection shell for telecommunication and power systems, preventing environmental damage to internal devices. Its structure integrates ...



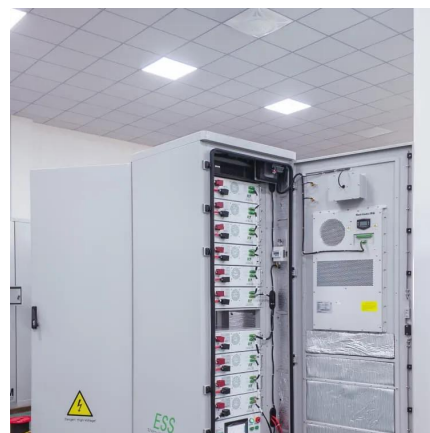
[Outdoor/Base Station Energy Storage System Solution](#)

Get an in-depth look at our new energy storage technology case details, with detailed information on our successful projects and the solutions we provided. ,



[An Independent UAV-Based Mobile Base Station](#)

Feb 22, 2025 · In disaster scenarios, e.g., earthquakes, tsunamis, and wildfires, communication infrastructure often becomes severely damaged. To rapidly restore damaged communication ...



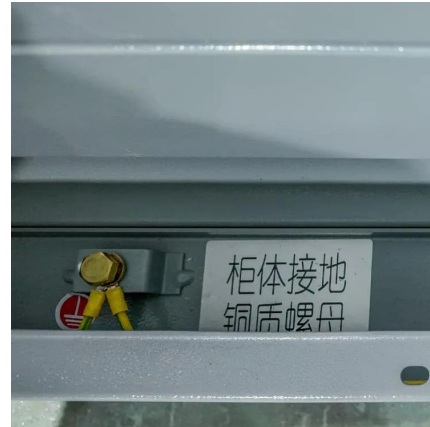
[UWB Outdoor Base Station 2025-2033 Overview: Trends, ...](#)

Oct 26, 2025 · The global UWB Outdoor Base Station market is poised for significant expansion, driven by the escalating demand for high-precision positioning and location-based services ...



Telecom Base Station , Outdoor Electronics Vents

Outdoor electronic products include outdoor lamps, security monitoring equipment, communication base stations, photovoltaic inverters, sensors, and walkie talkies, etc., ranging ...



Lithium Storage Base Station Safety: Navigating the New ...

As global renewable energy adoption surges 23% year-over-year, lithium storage base stations now power 68% of modern grid stabilization systems. But here's the uncomfortable truth: 2023 ...

Base stations and networks

5 days ago · Base station output power is relatively low The antenna output power level is typically between 20 watts and a few hundred watts for an outdoor base station. Television ...



Station Safety-designed for wireless base stations and

4 days ago · ZTE's Station Safety solution is designed for wireless base stations and substations. Deploy intelligent cameras, audible and visual alarms, electronic fences and passive electronic ...



An Independent UAV-Based Mobile Base

...

Feb 22, 2025 · In disaster scenarios, e.g., earthquakes, tsunamis, and wildfires, communication infrastructure often becomes severely damaged. ...



Contact Us

For technical specifications, project proposals, or partnership inquiries, please visit:
<https://www.meble-decorator.pl>

Scan QR Code for More Information



<https://www.meble-decorator.pl>