

Lithium iron phosphate battery cylindrical





Overview

What are the different types of lithium phosphate batteries?

1. Cylindrical LiFePO₄ Cells Cylindrical LiFePO₄ cells are the most commonly used type of lithium iron phosphate batteries. They resemble the shape of traditional AA or AAA batteries and are widely employed in applications where high power and durability are essential.

What are lithium iron phosphate (LiFePO₄) batteries?

Lithium iron phosphate (LiFePO₄) batteries are known for their high safety, long cycle life, and excellent thermal stability. They come in three main cell types: cylindrical, prismatic, and pouch. Each of these types has distinct characteristics that make them suitable for various applications.

What is a cylindrical lithium ion battery?

Cylindrical cells one of the most widely used lithium ion battery shapes due to ease to use and good mechanical stability. The tubular cylindrical shape can withstand high internal pressures without collapsing. Melasta produces multiple sizes and capacities according to the customer requirement.

Why should you choose a cylindrical LiFePO₄ battery?

Long Cycle Life: These cells can endure thousands of charge and discharge cycles, providing a long lifespan, which is crucial for applications like electric vehicles and solar energy storage. **High Safety:** Compared to other lithium-ion batteries, cylindrical LiFePO₄ cells are less prone to overheating or catching fire.



Lithium iron phosphate battery cylindrical

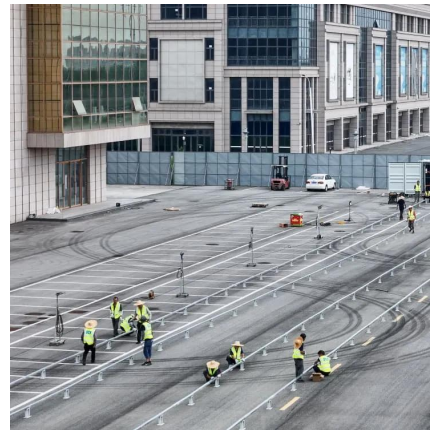


Types of LiFePO4 Battery Cells: Cylindrical, ...

6 days ago · Lithium iron phosphate (LiFePO4) batteries are known for their high safety, long cycle life, and excellent thermal stability. They come in ...

Samsung SDI's cylindrical battery, LFP+ technology win ...

Feb 24, 2025 · Samsung SDI's cylindrical battery cell and its technology for its next-generation lithium iron phosphate (LFP) battery, dubbed LFP+, won the Korea Battery Association's ...



LiFe-Shenzhen Melasta Battery Co., Ltd

Jul 4, 2023 · These cells have high density and light weight which enable this technology to use in multiple devices. Lithium Iron Phosphate Cylindrical Cells Cylindrical cells one of the most ...

Gotion 33140 lifepo4 15ah 3.2V Cylindrical ...

Gotion brand new cylindrical 33140 batteries, 3.2V 15ah lifepo4 battery, good as electric bicycle battery, car battery, motorcycle batteries, golf cart ...



Types of LiFePO4 Battery Cells: Cylindrical, Prismatic, and ...

6 days ago · Lithium iron phosphate (LiFePO₄) batteries are known for their high safety, long cycle life, and excellent thermal stability. They come in three main cell types: cylindrical, ...



21700 Lithium Iron Phosphate Cylindrical ...

21700 Lithium Iron Phosphate Cylindrical Battery
LR2170EH Nominal Capacity (Ah) /0.2C:3.00
Energy Density (Wh/L):386 Electrochemical ...



Cylinder LiFePO₄ rechargeable battery cells

Pkenergy sells Class A cylindrical lithium iron phosphate cells in various sizes. These batteries last longer and have a higher depth of discharge. Customers can wholesale according to different ...



[Reliable Power: LiFePO4 Battery & LiFePO4 ...](#)

6 days ago · Source top-tier lithium iron phosphate solutions from an industry-leading manufacturer. Our A-grade LiFePO4 cells and custom ...



[Su-vastika : The future of home energy storage](#)

Sep 2, 2023 · A LiFePO4 cylindrical cell is a type of lithium iron phosphate (LiFePO4) battery that has a cylindrical shape. Cylindrical cells are the most common type of LiFePO4 cell and are ...



[Experimental and simulation study on thermal](#)

Feb 5, 2020 · Thermal condition is crucial to the safety and performance of battery and battery pack. In this work, a two-dimensional, axisymmetric, electrochemical-thermal coupled model ...



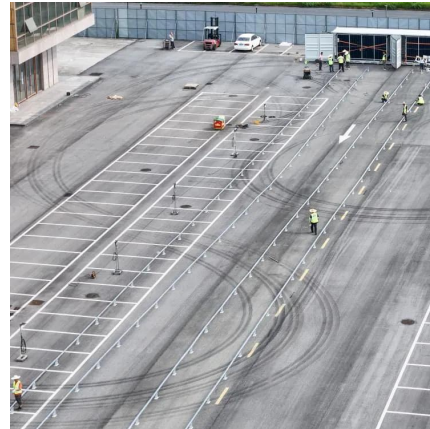
Cylindrical battery cell

Nov 19, 2025 · Cylindrical battery cell Cylindrical and prismatic batteries are the most common choices for manufacturing lithium batteries on the market. Cylindrical batteries are the most ...



What is Cylindrical Lithium Iron Phosphate Battery? Uses

Oct 5, 2025 · A Cylindrical Lithium Iron Phosphate battery is a type of lithium-ion battery characterized by its cylindrical shape, typically with dimensions like 18650 or 26650.

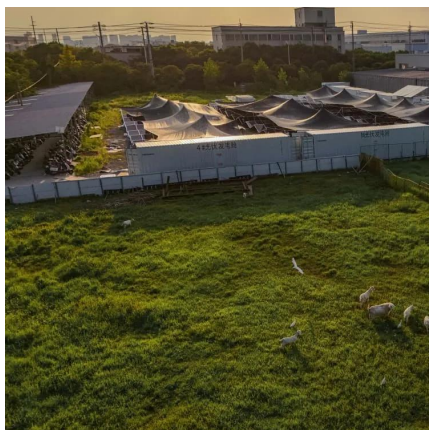


Thermal Modelling and Temperature Estimation of a ...

Mar 22, 2025 · Assessing a battery's electrical and thermal behaviour is critical in the later stages of developing battery management systems (BMSs). The present study aims at the thermal ...

Cylindrical vs Prismatic LiFePO4 Battery Cells

Jul 16, 2024 · Lithium Iron Phosphate (LiFePO₄) batteries are increasingly popular across various industries, from electric vehicles to renewable ...



Cylindrical LiFePO₄ Cells

Premium cylindrical LiFePO₄ cells with 3,000+ cycle life, fast charging, and superior safety. Available in 18650, 26650, 32650 formats for industrial applications, energy storage, and ...



What Is A Soft Pack Lithium Iron Phosphate ...

Dec 16, 2022 · A soft pack lithium iron phosphate (short for: LiFePO_4 / LFP/ LiFe) battery refers to a lithium-ion battery with lithium iron phosphate as ...



Cylindrical battery cell

Nov 19, 2025 · Cylindrical battery cell Cylindrical and prismatic batteries are the most common choices for manufacturing lithium batteries on the ...

Thermal accumulation characteristics of lithium iron phosphate

Sep 15, 2025 · Therefore, this paper takes the 18,650 cylindrical lithium iron phosphate battery provided by a company as the research object, and the main parameters of the battery are ...



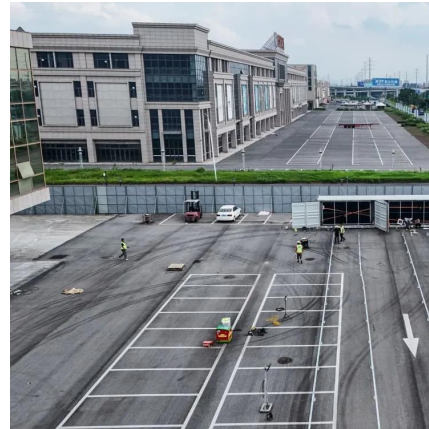
Product

ABF focuses exclusively on manufacturing and enhancing high-performance prismatic Lithium Iron Phosphate (LFP) batteries - the safest, longest ...



Cylindrical lithium battery classification and ...

May 17, 2023 · Cylindrical lithium batteries are divided into different systems of lithium iron phosphate, lithium cobaltate, lithium manganate, cobalt ...

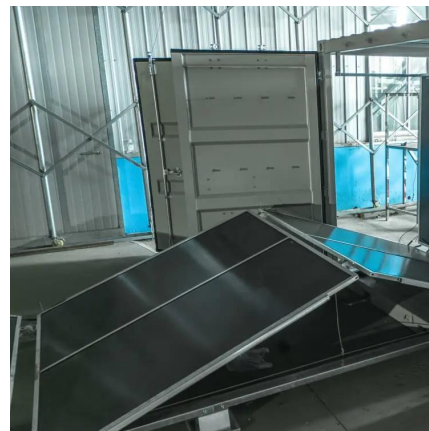


LiFePO4 Battery Cell: Prismatic vs Pouch vs Cylindrical Lithium ...

Mar 3, 2025 · A LiFePO4 cylindrical lithium-ion battery is a type of rechargeable battery that features a cylindrical shape and uses Lithium Iron Phosphate (LiFePO4) as the cathode material.

LiFePO4 Battery Cell: Prismatic vs Pouch VS ...

Mar 3, 2025 · A LiFePO4 cylindrical lithium-ion battery is a type of rechargeable battery that features a cylindrical shape and uses Lithium ...



Why Cylindrical LiFePO4 Cells Are Revolutionizing Energy ...

Apr 21, 2025 · The Unique Advantage of Cylindrical LiFePO4 Design Cylindrical LiFePO4 cells combine lithium iron phosphate chemistry with robust mechanical structuring to deliver: ...



Thermal Modelling and Temperature Estimation of a Cylindrical Lithium

Mar 22, 2025 · Assessing a battery's electrical and thermal behaviour is critical in the later stages of developing battery management systems (BMSs). The present study aims at the thermal ...

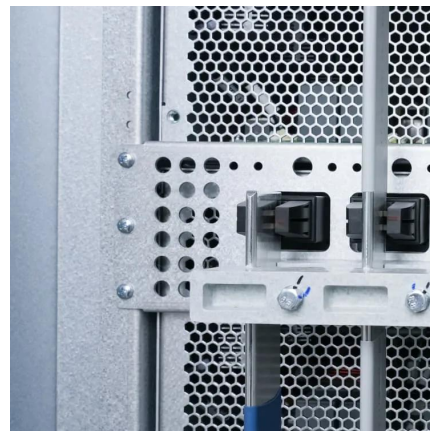


[Lifepo4 \(Lithium Iron Phosphate\) Battery Cell](#)

Keheng is an LFP battery manufacturer that produces lithium iron phosphate (LiFePO₄) Cylindrical and prismatic battery cells.

[Cylindrical vs Prismatic LiFePO₄ Battery Cells](#)

Jul 16, 2024 · Lithium Iron Phosphate (LiFePO₄) batteries are increasingly popular across various industries, from electric vehicles to renewable energy storage. Among the different formats of ...



[LiFe-Shenzhen Melasta Battery Co., Ltd](#)

Jul 4, 2023 · These cells have high density and light weight which enable this technology to use in multiple devices. Lithium Iron Phosphate Cylindrical ...



Contact Us

For technical specifications, project proposals, or partnership inquiries, please visit:
<https://www.meble-decorator.pl>

Scan QR Code for More Information



<https://www.meble-decorator.pl>