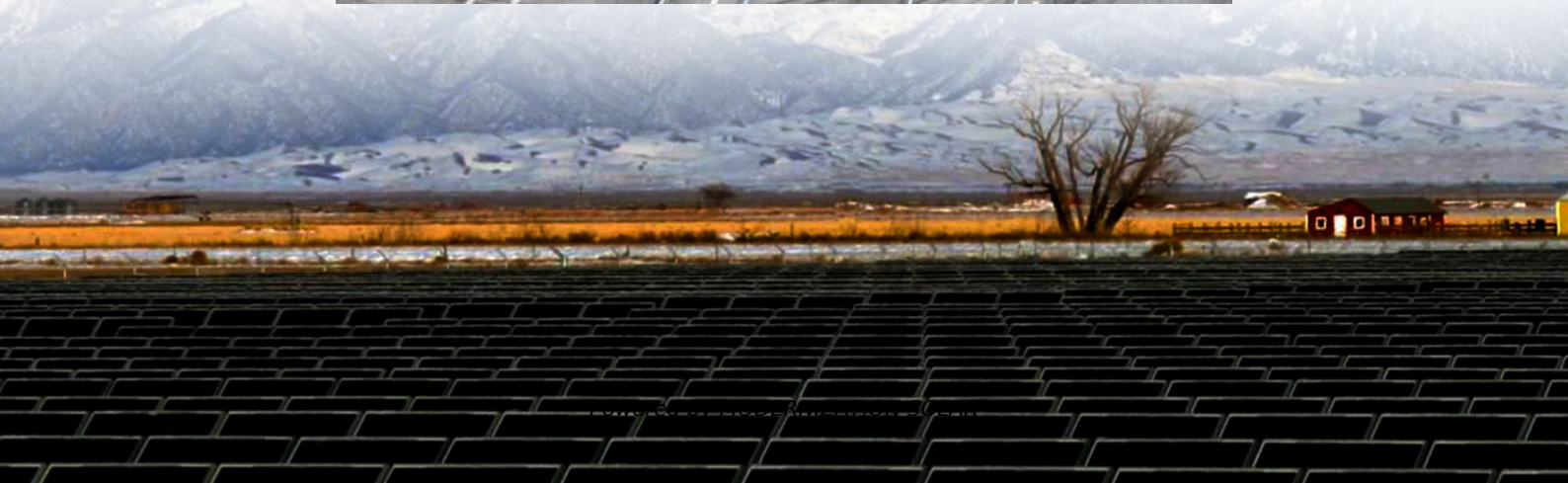
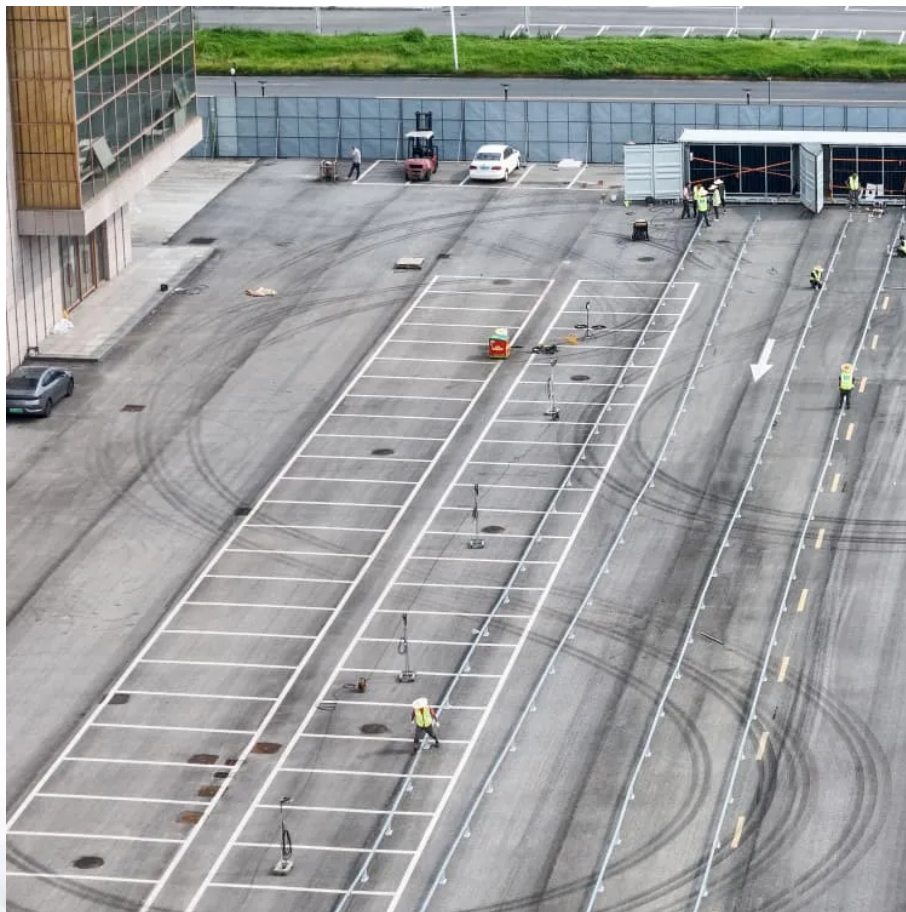


Is the base station communication equipment weak current





Overview

Mobile phones and other mobile devices require a network of base stations in order to function. The base station antennas transmit and receive RF (radio frequency) signals, or radio waves, to and from.

Do communication base stations perform post-earthquake functionality using Bayesian network?

A method to evaluate the post-earthquake functionality of communication base stations using Bayesian network is developed. The dependence between the equipment and its hosting building structure, and the impact of power outages are considered. The method is validated using seismic damage data from the Ludian Earthquake.

What causes a communication base station to fail?

Power interruption is a significant contributor to communication base station functional failure. Communication systems closely rely on power systems, and power outages can result in widespread station interruptions. In the case of the earthquake in Changning County, 90% of disrupted base stations experienced power interruptions as the cause .

Why are base stations an inevitability?

These types of objects are an inevitability since they serve the purpose of providing signal transfer for data and voice between mobile mobiles. The idea of base stations is anchored in their function to provide coverage, capacity, and connectivity, hence allowing for extending the working capabilities of mobile phones and other radio gear.

Why are base stations important in cellular communication?

Base stations are important in the cellular communication as it facilitate seamless communication between mobile devices and the network communication. The demand for efficient data transmission are increased as we are advancing towards new technologies such as 5G and other data intensive applications.



Is the base station communication equipment weak current

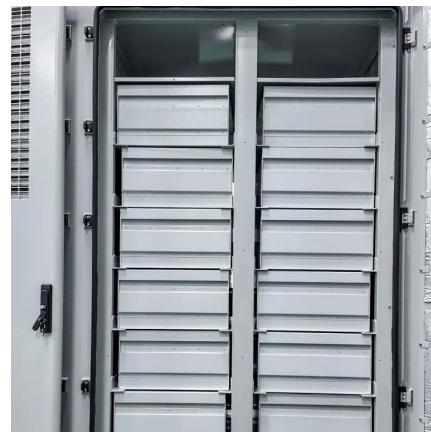


[What are the weak current communication base stations](#)

6 FAQs about [What are the weak current communication base stations] Why are base stations important? In the world of wireless communication, the choice of channels for base stations ...

[A guide to choosing Base Station Antennas](#)

Mar 1, 2023 · Conclusion Sadly, there isn't a silver bullet when it comes to solving 5G roll out challenges. There isn't a one size fits all or a single ...



[Simulation Research on Current Distribution Characteristics ...](#)

Sep 10, 2020 · Mobile communication base stations are the basic facilities of telecommunication operation networks. When the communication base station is struck by lightning, a very high ...



RBS (radio base station)

Jun 12, 2023 · A Radio Base Station (RBS), also known as a base transceiver station (BTS), is a key component of a cellular network ...



Power Base Station

If an adjacent base-station transmission (UTRA or LTE) is detected under certain conditions, the maximum allowed Home base-station output power is reduced in proportion to how weak the ...



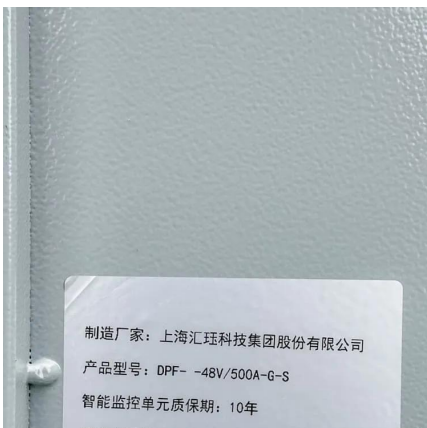
Optimizing redeployment of communication base station

Feb 6, 2025 · Most of the current research is based on the performance of the base station (BS) itself or the operation mode of the communication operator without considering the users' ...



Main Causes of Shortened Battery Lifespan in Base Stations

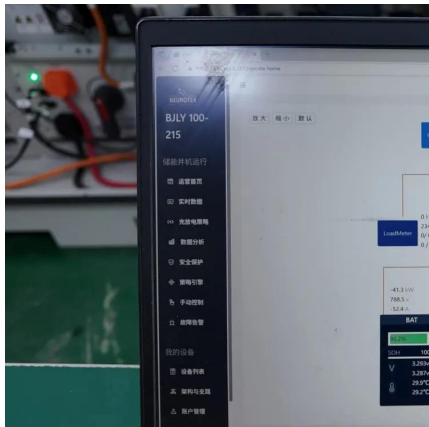
Mar 13, 2025 · 2. Current State of Battery Technology in Communication Systems Battery packs are a crucial part of the base station's DC uninterruptible power supply, with investments ...





Post-earthquake functional state assessment of communication base

Dec 1, 2024 · The method considers the dependence between the equipment and its hosting building structure, and the impact of power outages. This model produces seismic functional ...



[Research on the application of weak power system power ...](#)

In order to improve the stability and efficiency of power supply in 5G communication base station, the application of weak current system in 5G base station is studied. Theoretical analysis and ...

[Communication Base Station Current Limiting , Huijue ...](#)

The invisible culprit often lies in communication base station current limiting - a critical yet under-discussed safeguard preventing network collapse. But is today's current limiting methodology ...



BS (Base Station)

Mar 4, 2023 · A base station (BS) is a key component of modern wireless communication networks, providing the interface between wireless ...



Base Station Antenna

The levels of public exposure to electromagnetic energy from any base station vary depending on antenna type, location and distance from the base station. The base station antennas are most ...



Base Stations

Jul 23, 2025 · The present-day tele-space is incomplete without the base stations as these constitute an important part of the modern-day scheme ...

5G Base Station

Jun 26, 2023 · 5G base station is the core equipment of 5G network, which provides wireless coverage and realizes wireless signal transmission ...



[What Are Base Station Antennas? Complete ...](#)

Nov 20, 2024 · In modern telecommunications systems, the base station antenna stands out as an undeniable and crucial component to facilitate ...



What Is A Base Station?

Apr 22, 2024 · A base station is an integral component of wireless communication networks, serving as a central point that manages the ...



Base stations and networks

5 days ago · Mobile phones and mobile devices require a network of radio base stations to function. Radio waves have been used for communication for more than 100 years.



Base Stations

Jul 23, 2025 · The present-day tele-space is incomplete without the base stations as these constitute an important part of the modern-day scheme of wireless communications. They are ...



What is a Base Station Cabinet

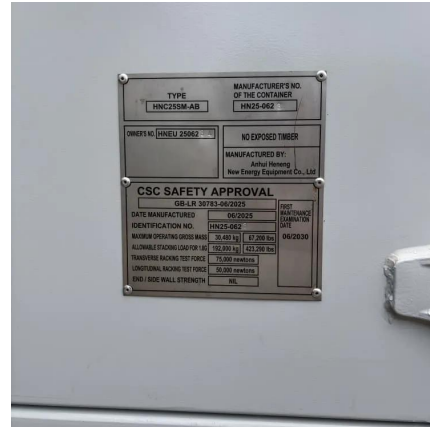
May 9, 2025 · A base station cabinet protects telecom equipment, ensures stable power, cooling, and security, and supports 4G, 5G, IoT, and ...





Post-earthquake functional state assessment of communication base

Dec 1, 2024 · There is a lack of models that can fully evaluate the post-earthquake functional states of base stations with the consideration of the dependencies between different ...



Energy-saving design and implementation in metro weak current ...

Dec 4, 2021 · The XGBoost algorithm is used to establish a prediction model for station weak current system energy consumption. Analysis shows that there is a strong correlation between ...

Contact Us

For technical specifications, project proposals, or partnership inquiries, please visit:
<https://www.meble-decorator.pl>

Scan QR Code for More Information



<https://www.meble-decorator.pl>