

Inverter limits output power





Overview

Curtailment: The inverter will limit the PV array's output to prevent generating more power than it can handle. This process is known as curtailment. What happens if a PV inverter reaches a maximum current limit?

The inverter's DC input current should always stay within its maximum limit. If the PV module's output current exceeds this limit, it may lead to current-limited operation and potential inverter damage, reducing power generation efficiency and return on investment.

How many kW can a PV inverter output?

Export to Grid: Up to 4kW can be sent back to the grid because of the export limit. This means: The inverter can handle this 5kW AC output perfectly. However, the PV array is generating 10kW, so we have:.

What is a maximum input current in a PV inverter?

1. **Maximum Input Current Definition:** The maximum operating current allowed to pass through the PV side of an inverter. The input current is especially critical in scenarios with high peak power currents, such as those involving thin-film PV modules.

Can a 5kw inverter limit the output?

And they should give you your deposit back if you are not happy. But great question about the export limiter. An export limiter of, for example, 3.5kW on a 5kW inverter will not limit the output of the inverter to 3.5kW. It will (if properly configured) limit exports to the grid to 3.5kW.



Inverter limits output power



[Power Limitation of SOFAR Inverters](#)

Nov 22, 2024 · Power Limitation of SOFAR Inverters All the SOFAR inverters offer several possibilities to limit the AC active output power P

[Controlling the maximum current output on the AC side of a ...](#)

May 19, 2022 · With the ESS assistant you can limit the inverter output power to anything you want. This doesn't affect passthrough AC though. The peak is transient anyway, it's not for ...



[Inverter Specifications and Data Sheet](#)

2 days ago · The article provides an overview of inverter functions, key specifications, and common features found in inverter systems, along with ...



What happens to solar PV if the power output is limited by inverter

Generally, A higher array-to- inverter ratio may work for your system if your solar panels will not produce at their maximum power output due to the factors mentioned above. When this ...



[Decoding Inverter Parameters \(Part I\)](#)

Jan 25, 2025 · The inverter's DC input current should always stay within its maximum limit. If the PV module's output current exceeds this limit, it may ...



[How Solar Inverters Efficiently Manage High-Temperature ...](#)

Mar 6, 2025 · High temperatures can reduce solar inverter efficiency, limit power output, and shorten lifespan. Learn how heat impacts inverter performance and discover expert tips for ...



Grid power limitation

Nov 3, 2025 · Here you can decide whether you have a grid limitation, and specify its value. The limitation may be defined: either at the inverter level: the inverter power is limited to the rated ...



What happens to solar PV if the power output ...

Generally, A higher array-to- inverter ratio may work for your system if your solar panels will not produce at their maximum power output due to the ...

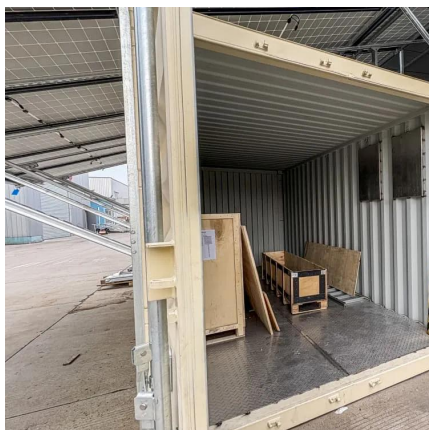


How does a solar export limiter work?

Aug 22, 2024 · An export limiter of, for example, 3.5kW on a 5kW inverter will not limit the output of the inverter to 3.5kW. It will (if properly configured) ...

How to limit inverter output ?

Oct 18, 2024 · This is not possible, as the inverter will just try to keep up with your AC use. So you are the limiter. Some options / work arounds: -You can put a lower value breaker on the output ...



Understanding Solar Inverter Curtailment: ...

Aug 23, 2024 · So, what happens to this excess energy? Curtailment: The inverter will limit the PV array's output to prevent generating more power ...



Understanding Solar Inverter Curtailment: What Happens to ...

Aug 23, 2024 · So, what happens to this excess energy? Curtailment: The inverter will limit the PV array's output to prevent generating more power than it can handle. This process is known as ...



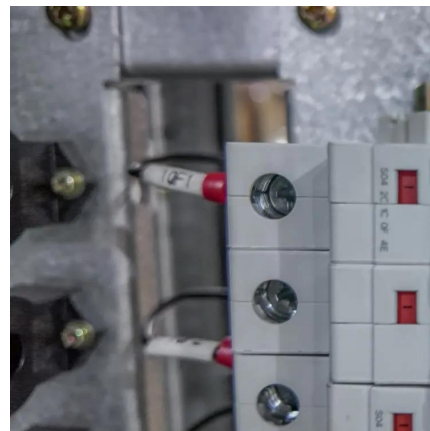
Inverter Operating Limits

Nov 3, 2025 · Overview Physical models used Grid inverter Inverter Operating Limits The inverter input electronics assumes the function of choosing the operating point on the I/V curve of the ...

Configure Powerwall 3 Maximum Power /

...

Oct 23, 2025 · The maximum power / current output for Powerwall 3 is . Beginning with software version 24.20, the power / current output can be ...



How does a solar export limiter work?

An export limiter of, for example, 3.5kW on a 5kW inverter will not limit the output of the inverter to 3.5kW. It will (if properly configured) limit exports to the grid to 3.5kW. How a solar export ...



Grid power limitation

Nov 3, 2025 · Here you can decide whether you have a grid limitation, and specify its value. The limitation may be defined: either at the inverter level: ...

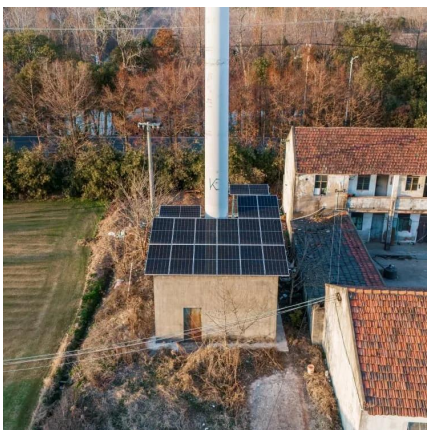


Effects of Feed-In Power Limitations of Photovoltaic Systems

Oversizing of inverters describes the situation when a PV array is assembled with a higher capacity than the rated size of the inverter. This is quite possible, as PV systems often ...

Multiplus 2 Limit Power Output ESS Mode 2 (Solved)

Aug 9, 2021 · This limit only applies while connected to AC-in: In inverter mode, the AC loads determine how much power is drawn from the battery. BULLET POINT 1- I have tried setting ...



Decoding Inverter Parameters (Part I)

Jan 25, 2025 · The inverter's DC input current should always stay within its maximum limit. If the PV module's output current exceeds this limit, it may lead to current-limited operation and ...



[Inverter , Efficiency & Output Waveform](#)

Jan 15, 2019 · The article provides an overview of inverters in renewable energy systems, focusing on their role in converting DC to AC, their ...



[How does a solar export limiter work?](#)

An export limiter of, for example, 3.5kW on a 5kW inverter will not limit the output of the inverter to 3.5kW. It will (if properly configured) limit exports ...

[Inverter Specifications and Data Sheet](#)

2 days ago · The article provides an overview of inverter functions, key specifications, and common features found in inverter systems, along with an example of power calculations and ...



"Limit inverter power"

Sep 19, 2023 · "Limit inverter power" - expected operation Hello, I have a pair of 240V MultiPlus-II 5kW units connected in parallel and operating effectively to a grid set-point of 50W; charging ...



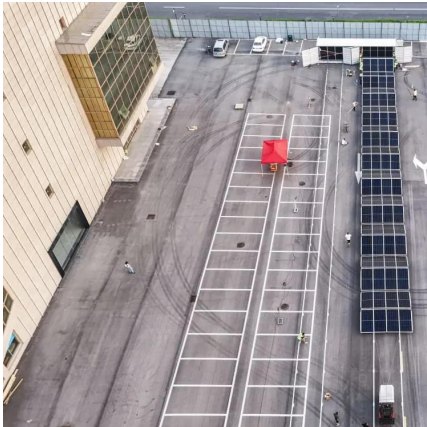
Effects of Feed-In Power Limitations of Photovoltaic Systems

What is Solar Inverter Clipping? , inverter Limit inverter power in 3-phase systems - VictronEnergyInverter output voltage, grid voltage, and actual and reference grid What is Inverter Efficiency? , inverter How does a solar export limiter work? - SolarQuotes® Help Centre v6.32: Has inverter output power limit changed? - Problems / Bugs Understanding Basics Of An Inverter Circuit: How It Works And Its Measured inverter efficiencies versus output power at four different PV output power with the Power Limiting Control (PLC) strategy under Active power output of the two inverters VIII Conclusions , Download PPT - CMOS AMPLIFIERS PowerPoint Presentation, free download - ID:1414149 See allsofarsolar [PDF]



Power Limitation of SOFAR Inverters

Nov 22, 2024 · Power Limitation of SOFAR Inverters All the SOFAR inverters offer several possibilities to limit the AC active output power P



Inverter Operating Limits

Nov 3, 2025 · Overview Physical models used Grid inverter Inverter Operating Limits The inverter input electronics assumes the function of ...

Contact Us

For technical specifications, project proposals, or partnership inquiries, please visit: <https://www.meble-decorator.pl>



Scan QR Code for More Information



<https://www.meble-decorator.pl>