

Inverter continuous power





Overview

What is a continuous load rated inverter?

Here's what you need to know. What Is Continuous Load?

The continuous load rating refers to how much power (in watts) your inverter can deliver constantly, without overheating or shutting down. This is the core power output you should size your inverter around.

When can an inverter start?

Because these inductive loads require a large current to start at the moment of startup, the appliance can start normally only when the inverter peak power is greater than the starting power of the appliance. Under normal circumstances, the peak power is equal to 2 times the rated power. 2. Different types of load.

What is the efficiency of an inverter?

The efficiency of an inverter refers to the percentage of input power that is converted into usable AC current, acknowledging that no system is 100% efficient and there will always be some losses. This efficiency varies based on the power demand, generally peaking when higher power levels are utilized.

What is continuous output power?

Continuous output power is the long term normal operation. It offers continuous power for your load normal working. If your electric devices draw a combined total of 600 watts, then you need to buy an inverter that has a continuous output rating of 600 watts.



Inverter continuous power



[Amazon : DEWALT DXAEPI1000 Power ...](#)

Oct 6, 2017 · Buy DEWALT DXAEPI1000 Power Inverter 1000W Car Converter with LCD Display: Dual 120V AC Outlets, 3.1A USB Ports, 12V ...

Should I choose a high or low inverter? Understanding "continuous power"

Two rated points, continuous power and surge power need to be taken into consideration when selecting a inverter. Continuous power is the level of power that an inverter can support for a ...



[Inverter Peak Power For Use: How Much is ...](#)

Oct 27, 2025 · This article will discuss inverter peak power, why it is essential, how it compares to continuous power, and other information ...

[Inverter sizing and selection](#)

Jan 19, 2021 · The inverter should be able to meet the continuous power demand for all loads and the surge power demand for all loads that will ...



Useful guide to inverter peak power and how to choose an inverter

Dec 17, 2023 · Power inverters come in many specifications, which usually include rated power and inverter peak power. Rated power is continuous output power, which refers to the power ...



Does a Solar Inverter Run Continuously? What Happens If It ...

The Effect of Continuous Operation on Electronic Components Heating is a significant issue in inverters, as it is in electronic devices. An inverter operating at constant high load generates ...



Understanding Your Inverter: Continuous ...

May 16, 2025 · Yes - as long as the total running wattage of your appliances stays below the inverter's continuous power rating, and their combined ...





What is the difference between continuous power and peak power?

Continuous output power is the long term normal operation. It offers continuous power for your load normal working. If your electric devices draw a combined total of 600 watts, then you ...



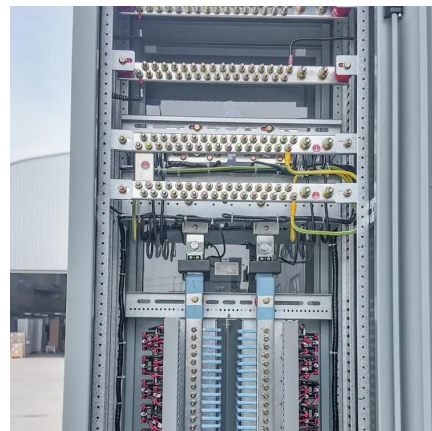
Inverter Peak Power vs Rated Power: What it ...

Apr 21, 2025 · When choosing an inverter, you often see two parameters: rated and peak power. But what do these numbers mean? And how do ...



Jupiter 3000 Watt Inverter

JUPITER 3000 Watt Continuous/6000 Watt Peak Modified Sine Wave Power Inverter High surge capacity for products that require power up to 6000 ...



Inverter Basics , inverter

Dec 29, 2023 · The continuous output power of any inverter can be influenced by the battery providing the DC input voltage. The battery must ...



[Understanding Your Inverter: Continuous Load vs Start-Up ...](#)

May 16, 2025 · Yes - as long as the total running wattage of your appliances stays below the inverter's continuous power rating, and their combined start-up surge doesn't exceed the ...

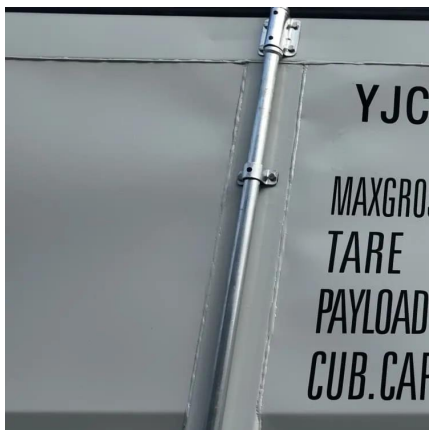


[Amazon : DEWALT DXAEP1000 Power ...](#)

Mar 13, 2023 · About this item 1000 Watt continuous output power inverter with dual 120V AC outlets and 3.1A USB ports provides power on the go. ...

[What Size Inverter Will Run a Home?](#)

Sep 27, 2023 · Understand the concept of inverter size, continuous power, and explore how these factors affect the total power supplied by inverter ...



[Useful guide to inverter peak power and how ...](#)

Dec 17, 2023 · Power inverters come in many specifications, which usually include rated power and inverter peak power. Rated power is continuous ...



[Top 10 5000 Watt Continuous Power Inverters for Reliable ...](#)

Oct 30, 2025 · A 5000 watt continuous power inverter supplies steady energy for heavy electrical devices. Choosing the right one ensures reliable power for home, work, or travel. Power ...



[How powerful an inverter should I buy? , Advance New Energy](#)

An inverter with a peak power of 2400 watts and a continuous power of 1200 watts is a good choice. Note: If you choose a more powerful inverter, let's say 5000 watts peak power and ...

[Top 10 5000 Watt Continuous Power ...](#)

Oct 30, 2025 · A 5000 watt continuous power inverter supplies steady energy for heavy electrical devices. Choosing the right one ensures reliable ...



[Inverter Basics and Selecting the Right Model](#)

Selecting An Inverter - Solar and BackupSome Basics First Watts - Or What Size Power Inverter Do I Need?Different Types of InvertersThere are 3 major types of inverters - sine wave (sometimes referred to as a "true" or "pure" sine wave), modified sine wave (actually a modified square wave), and square wave. 1. Sine Wave A sine wave is what you get from your local utility company and (usually) from a generator. This is because it is generated by rotating AC machinery



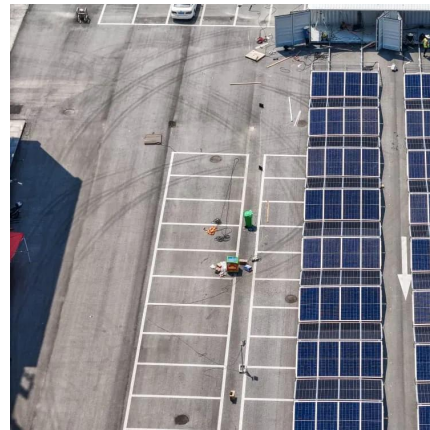
and sine wave See more on solar-electric and tech

How powerful an inverter should I buy?

An inverter with a peak power of 2400 watts and a continuous power of 1200 watts is a good choice. Note: If you choose a more powerful inverter, let's ...

[1000 Watt Continuous Power Inverter](#)

2 days ago · Searching for a 1000-Watt Continuous Power Inverter? Discover portable jump starters, battery starters, and more from Schumacher Electric.



[What is Peak Power on an Inverter?](#)

Have you been researching power inverters and come across a term called 'peak power'? If you're a little confused then don't worry. With these electronics, it is easy to get a little mixed ...

[Inverter Basics , inverter](#)

Dec 29, 2023 · The continuous output power of any inverter can be influenced by the battery providing the DC input voltage. The battery must be sufficiently large to supply the high current ...



[What is the difference between](#)



continuous ...

Continuous output power is the long term normal operation. It offers continuous power for your load normal working. If your electric devices ...

Inverter Basics and Selecting the Right Model

An inverter needs to supply two needs - Peak, or surge power, and the typical or usual power. Surge is the maximum power that the inverter can supply, usually for only a short time - a few ...



Inverter Peak Power vs Rated Power: What it is and Why It ...

Apr 21, 2025 · When choosing an inverter, you often see two parameters: rated and peak power. But what do these numbers mean? And how do they affect your power needs? In this guide, ...

How Much Power Do 3000W Inverters Need Continuously or ...

Jun 19, 2024 · A 3000W inverter typically requires a continuous power supply of around 3000 watts to operate efficiently, with additional surge power requirements that can significantly ...





Contact Us

For technical specifications, project proposals, or partnership inquiries, please visit:
<https://www.meble-decorator.pl>

Scan QR Code for More Information



<https://www.meble-decorator.pl>