

## **Inverter 3 7kw**





## Overview

---

What is a 3.7 kW variable frequency drive inverter?

The 3.7 kw variable frequency drive inverter's rugged casing plays multiple roles in its design. It is not only about protecting the circuits and electronic components inside the device but also about the safety, stability, and reliability of the device.

What is a 3.7kw 3 phase variable frequency drive?

The multiple-function keyboard of the 3.7kw 3 phase variable frequency drive controls the operation of the 3.7kw variable frequency drive inverter, such as start, stop, and acceleration.

What is a 3KW inverter?

Sale! 3kw inverter with a wall mountable lithium battery to keep lights on and family happy, entertainment and wifi guaranteed to keep going for 4hrs. The system will keep your Security lights, cctv and electric fence active for your safety. Can run kettle or microwave as well but remember its just for back up.

What is a 3KW hybrid solar inverter?

This 3kW Hybrid all-in-one, off grid, PV inverter is a combination of 145V 80A MPPT solar charge controller, solar inverter, 40A battery charger and AC auto-transfer switch with a peak DC to AC conversion efficiency of 93%. Inverter Voltage Needed?

WiFi Module?

Remote Control Panel?

GPRS Module?

Shipping Method?



Special Instructions?



## Inverter 3 7kw

---



### [FRN3.7G11S-4JE , Fuji , FRENIC, Inverter, 3.7kW](#)

Dec 4, 2025 · FRN3.7G11S-4JE Fuji FRENIC Inverter 3.7kW 3 Phase 380-480V AC 50/60Hz 6.8kVA 0.1-400Hz 9A Japan Export Version Is Fuji FRN3.7G11S-4JE not the part you are ...

### [Delta VFD037B43A-3 3.7kW Inverter](#)

Experience precision and efficiency with the Delta VFD037B43A-3 3.7kW inverter. Ideal for industrial applications, this variable frequency drive ensures robust power output, energy ...



### [FRN3.7G11S-4JE , Fuji , FRENIC, Inverter, 3.7kW](#)

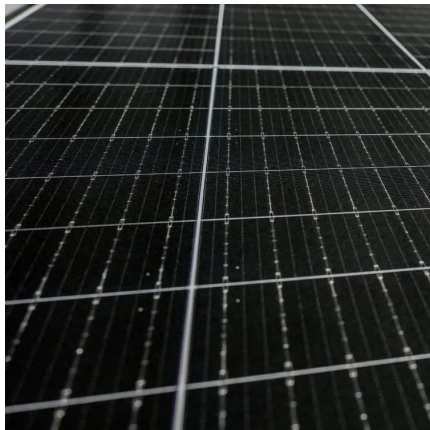
Dec 4, 2025 · FRN3.7G11S-4JE Fuji FRENIC Inverter 3.7kW 3 Phase 380-480V AC 50/60Hz 6.8kVA 0.1-400Hz 9A Japan Export Version Is Fuji ...

## Enc 220V Triple Phase Input Inverters 3.7kw 5HP Frequency Inverter

Nov 3, 2025 · Product Description ENC 220V Triple Phase Input Inverters 3.7kw 5HP Frequency Inverter Instructions EDS1000 series



Multi-function universal frequency inverter has 150% ...

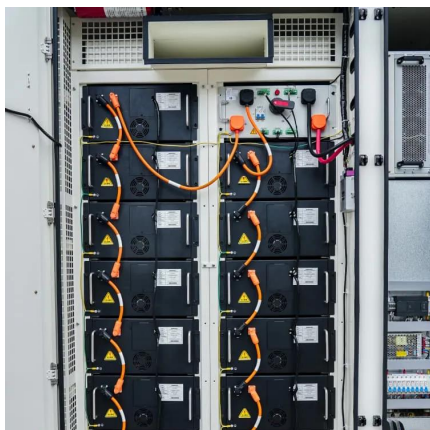


### [Fuji Variable torque load Inverter FRN3.7F1S-4A , Wingate ...](#)

Fuji Electric Variable torque load inverter FRENIC ECO FRN3.7F1S-4A, 3 phase 380 to 480VAC 50/60 Hz, 3.7kW and Fan Cooling. Please call/email us for more details.

### [J1000 INVERTER 3.7kW/3kW, CIMR-JC4A0009BAA](#)

4 days ago · The Yaskawa J1000 Inverter is a compact variable speed inverter drive providing efficient, high performance features in a compact package. All of Yaskawa's J1000 range of ...



### [3 phase 400 VAC Inverter 3G3JZ-A4037 3.7kw 3700W](#)

Discover the Omron 3 Phase 400 VAC Inverter 3G3JZ-A4037, delivering 3.7 kW (3700W) of reliable power for efficient ...





### [Enc 220V Triple Phase Input Inverters 3.7kw ...](#)

Nov 3, 2025 · Product Description ENC 220V Triple Phase Input Inverters 3.7kw 5HP Frequency Inverter Instructions EDS1000 series Multi-function ...

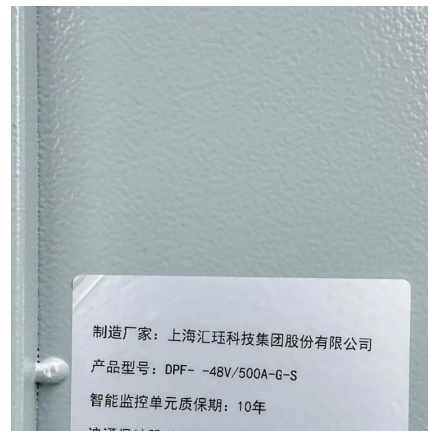


### [VFD Single to 3 Phase, 3.7kw 220V AC Single-Phase Variable ...](#)

3 days ago · VFD Single to 3 Phase, 3.7kw 220V AC Single-Phase Variable Frequency Drive Inverter, VFD Speed Controller Inverter for 3-Phase Motor, Find Details and Price about VFD ...

### [Delta Electronics Inverter Drive, 3.7 kW, 3 Phase, 400 V ac, 9 ...](#)

Buy Delta Electronics Inverter Drive, 3.7 kW, 3 Phase, 400 V ac, 9 A, VFD-EL Series VFD037EL43A. Browse our latest Inverter Drives offers. Free Next Day Delivery available.



### [3 phase 400 VAC Inverter 3G3JZ-A4037 3.7kw 3700W](#)

Discover the Omron 3 Phase 400 VAC Inverter 3G3JZ-A4037, delivering 3.7 kW (3700W) of reliable power for efficient industrial applications and enhanced performance.



### 3.7KW 220V/380V Fuling Inverter

3.7KW 220V/380V BD600 FuLing Inverter Vector Frequency Driver Inverter Vfd offers customized control, 3-phase output, and vector control for efficient performance., Alibaba



### Delta Electronics Inverter Drive, 3.7 kW, 3 ...

Buy Delta Electronics Inverter Drive, 3.7 kW, 3 Phase, 400 V ac, 9 A, VFD-EL Series VFD037EL43A. Browse our latest Inverter Drives offers. Free ...

### Frequency inverter, VFD, 3.7kW, 380V-480V , Seva-tec GmbH

Frequency inverter, VFD, 3.7kW, 380V-480V, 8A,& nbsp; braking resistor, EMV-Filter, IP54, including operation panel. Constant torque / variable torque for normal load and heavy duty ...



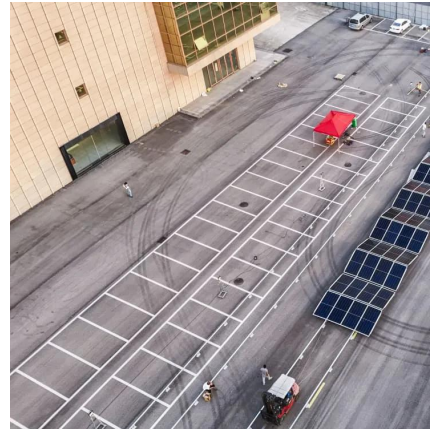
### 3.7 kW Frequency Inverter, 3 Phase 220V, 380V, 480V

The multiple-function keyboard of the 3.7kw 3 phase variable frequency drive controls the operation of the 3.7kw variable frequency drive inverter, such as start, stop, and acceleration. ...



### 7000 Watt DC Solar Inverters

These inverters can handle a range of power sources from 7,000 watts to 7,999 watts. Compare these 7kW solar inverters from Fronius, SMA, ...



### Mitsubishi D740 IP20 3.7kW 400V 3ph AC ...

Mitsubishi Automation D740 Series AC Frequency Inverter for 3.7kW (5HP) 400V 3 Ph motor in VxV or Vector control to 8A. Simple to set-up for ...

### Delta VFD-EL 3.7kW 400V 3ph IP20 AC Inverter Drive, C2 EMC

Delta Electronics VFD-EL Series AC Inverter for 3.7kW (5.0HP) 400V 3 Ph motor in VxV or Sensorless Vector control to 8.2A. Converts fixed frequency 3 phase 400V input to variable ...



### Delta VFD-E 3.7kW 400V 3ph IP20 AC Inverter ...

Delta VFD-E Series AC Inverter for 3.7kW (5HP) 400V 3ph motor to 8.5A. Operates in VxV or Sensorless Vector and converts fixed frequency Three ...





### MITSUBISHI 3.7kW Inverter FR-D740-3.7K ...

3.7kW inverter from the FR-D740 series,  
Applicable motor capacity (kW), 3.7. Rated  
output capacity (kVA), 6.1. Rated output current  
(A), 8.0.



## Contact Us

---

For technical specifications, project proposals, or partnership inquiries, please visit:  
<https://www.meble-decorator.pl>

### Scan QR Code for More Information



<https://www.meble-decorator.pl>