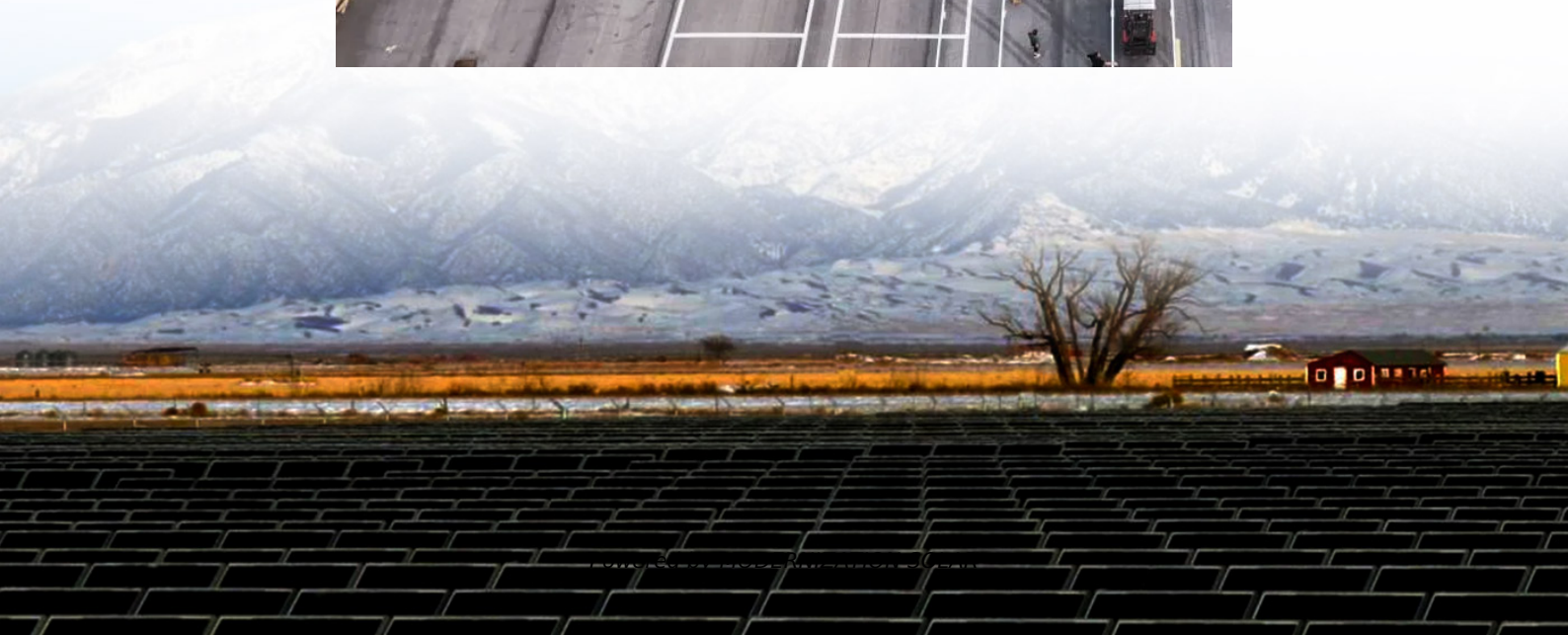


# **Intelligent Folding Container for Railway Stations**





## Overview

---

Do mobile machinery configurations and railway yard operations affect container transportation?

In summary, many researchers have studied the mechanical scheduling of key steps in the container transportation process such as ship loading/unloading and container stacking in ACTs from different perspectives, but few studies have been conducted on the combination of mobile machinery configurations and railway yard operations.

How to reduce the impact of the Central railway station?

To reduce the impact on the operation of the central railway station, an IGV from the front yard must actively yield when it intersects with an IGV from the RYACT. This study can help to provide a reference for resource conservation and avoiding collisions at ports.

Are rail gantry cranes safe and non-crossing?

In order to reflect the complex interactions between pieces of terminal equipment such as rail gantry cranes (RGCs), IGVs, and double-cantilever rail cranes, Li, Yan, and Xu included safe-distance and non-crossing constraints.

Does increasing the number of IGVs improve the efficiency of railway yard?

The experiment revealed that increasing the number of IGVs can improve the efficiency of the railway yard, but the influence of increasing the number to a certain value on the overall task completion time of ARMGs is reduced, and the appropriate number of IGVs should be configured during task scheduling.



## Intelligent Folding Container for Railway Stations

---



### [The Influence of Intelligent Guided Vehicle ...](#)

Sep 27, 2024 · The efficiency of collecting and distributing goods has been improved by establishing railway lines that serve new automated ...

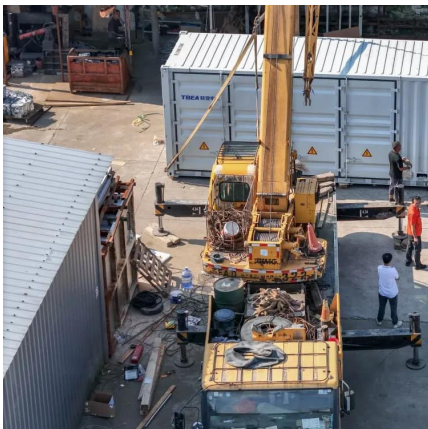
### [The Influence of Intelligent Guided Vehicle Configuration on ...](#)

Sep 27, 2024 · The efficiency of collecting and distributing goods has been improved by establishing railway lines that serve new automated container terminals (ACTs) and by ...



### [Robot positions container wagon pins . News , Railway ...](#)

Jun 4, 2025 · GERMANY: The use of an autonomous mobile robot to automate the repositioning of folding pins on container wagons has been successfully tested by Hamburger Hafen & ...



### [China debuts first mixed-mode autonomous railway yard](#)

Jul 8, 2025 · China has launched its first railway container terminal with mixed-mode autonomous driving capabilities, a move aimed at building an efficient, low-carbon, and intelligent modern ...





### [China launches first railway container terminal in Yiwu](#)

Jul 2, 2025 · China has launched its first railway container terminal with mixed-mode autonomous driving capabilities, a move aimed at building an efficient, low-carbon, and intelligent modern ...



### [Intelligent Container Yard Boosts Functional Upgrade of](#)

Dec 6, 2019 · Its information-based intelligent function provides technical and information guarantee for rail-sea intermodal transport, and provides new modes and experiences for the ...



### [China launches first railway container terminal ...](#)

Jul 2, 2025 · China has launched its first railway container terminal with mixed-mode autonomous driving capabilities, a move aimed at building ...





## Technical closure systems for rail/underground stations

FoldingPack® is the ideal closure system for railway and underground stations where small or large shopping areas need secure protection. Continuous footfall at any time of the day or ...



## China debuts first mixed-mode autonomous ...

Jul 8, 2025 · China has launched its first railway container terminal with mixed-mode autonomous driving capabilities, a move aimed at building ...

## Intelligent Container Yard Boosts Functional ...

Jun 12, 2019 · Its information-based intelligent function provides technical and information guarantee for rail-sea intermodal transport and provides ...



## Chinese railway terminal handles containers autonomously

Jul 15, 2025 · China has opened a railway container terminal with mixed-mode autonomous driving capabilities to reduce whole society logistics costs. The move is aimed at building an ...



## Intelligent Container Yard Boosts Functional Upgrade of Railway

Jun 12, 2019 · Its information-based intelligent function provides technical and information guarantee for rail-sea intermodal transport and provides new modes and experiences for the ...



## China's Suxi Terminal: Autonomous Rail Innovation & Trade ...

Jul 3, 2025 · The Suxi container terminal represents a significant leap forward in railway automation. Approved as China's first experimental zone for autonomous operations within a ...

## Robot positions container wagon pins . News ...

Jun 4, 2025 · GERMANY: The use of an autonomous mobile robot to automate the repositioning of folding pins on container wagons has been ...



## **Evolution of the economy and convenience of railway container ...**

Jun 1, 2025 · The transportation demand and positioning of railway stations affect its role in the network; thus, the demand and convenience of the station must be assessed to cope with the ...



## Contact Us

---

For technical specifications, project proposals, or partnership inquiries, please visit:  
<https://www.meble-decorator.pl>

### Scan QR Code for More Information



<https://www.meble-decorator.pl>