

How much power does 5G base station require





Overview

The 5G NR standard has been designed based on the knowledge of the typical traffic activity in radio networks as well as the need to support sleep states in radio network equipment. By putting the base sta.

Are 5G base stations causing more energy consumption?

However, Li says 5G base stations are carrying five times the traffic as when equipped with only 4G, pushing up power consumption. The carrier is seeking subsidies from the Chinese government to help with the increased energy usage.

Does 5G use more energy than 4G?

Carriers have been looking at energy efficiency for a few years now, but 5G will bring this to top of mind because it's going to use more energy than 4G. Telcos spend on average 5% to 6% of their operating expenses, excluding depreciation and amortization, on energy costs, according to MTN Consulting.

Does China Mobile have a 5G base station?

China Mobile has tried using lower cost deployments of MIMO antennas, specifically 32T32R and sometimes 8T8R rather than 64T64R, according to MTN. However, Li says 5G base stations are carrying five times the traffic as when equipped with only 4G, pushing up power consumption.

How much power does 5G power use?

The site's average load is 1.4 kW, with peak loads of 2.7 kW. However, the AC power limit is 1.6 kW. When 5G services were added in tests, peak loads exceeded the power limit. 5G Power's intelligent peak shaving technology leverages smart energy scheduling algorithms of software-defined power supply and intelligent energy storage.



How much power does 5G base station require



[How Much Power Does 5G Base Station Consume? , Huijue ...](#)

Aug 26, 2023 · The Silent Energy Crisis in Mobile Networks Have you ever wondered how much energy our hyper-connected world is consuming? 5G base stations, the backbone of next-gen ...

[5G base stations use a lot more energy than ...](#)

Apr 3, 2020 · Carriers have been looking at energy efficiency for a few years now, but 5G will bring this to top of mind because it's going to use more ...



[5G Power: Creating a green grid that slashes ...](#)

Jun 6, 2019 · Energy consumption per unit of data (watt/bit) is much less for 5G than 4G, but power consumption is much higher. In the 5G era, the ...

[5G Power: Creating a green grid that slashes costs, emissions ...](#)

Jun 6, 2019 · Energy consumption per unit of data (watt/bit) is much less for 5G than 4G, but power consumption is much higher. In the 5G era, the maximum energy consumption of a ...



[How Much Power Does a 5G Base Station Consume? - Smart ...](#)

The rise of 5G technology brings faster speeds and lower latency, but it also raises questions about its energy consumption. As 5G networks are rolled out across the globe, it is important ...



[What is the Power Consumption of a 5G Base Station?](#)

Nov 15, 2024 · Compared to its predecessor, 4G, the energy demand from 5G base stations has massively grown owing to new technical requirements needed to support higher data rates ...



[A technical look at 5G energy consumption and performance](#)

Sep 17, 2019 · How can 5G increase performance and ensure low energy consumption? Find out in our latest Research blog post.





What is 5G Energy Consumption?

5 days ago · The 5G network is a dynamic system that consumes energy continually and responds to spikes in network activity. Over 70% of this energy is consumed by RAN ...



5G base stations use a lot more energy than 4G base stations...

Apr 3, 2020 · Carriers have been looking at energy efficiency for a few years now, but 5G will bring this to top of mind because it's going to use more energy than 4G. Telcos spend on ...



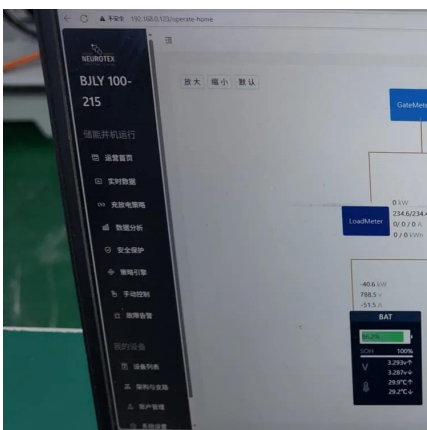
Why does 5g base station consume so much power and how ...

Apr 3, 2025 · The power consumption of the 5G base station mainly comes from the AU module processing and conversion and high power-consuming high radio frequency signals, the ...



Energy Management of Base Station in 5G and B5G: Revisited

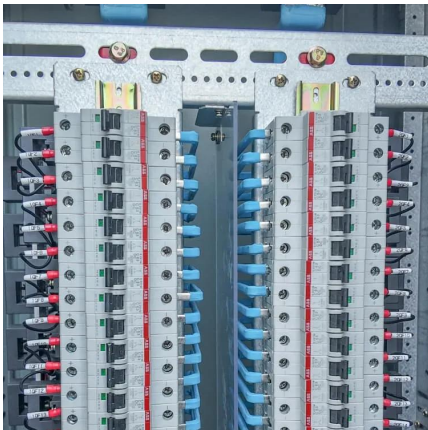
Apr 19, 2024 · Since mmWave base stations (gNodeB) are typically capable of radiating up to 200-400 meters in urban locality. Therefore, high density of these stations is required for ...





Why does 5g base station consume so much ...

Apr 3, 2025 · The power consumption of the 5G base station mainly comes from the AU module processing and conversion and high power ...



Base station 5G power consumption

Nov 5, 2025 · How much power does a 5G station use? The power consumption of a single 5G station is 2.5 to 3.5 times higher than that of a single 4G station. The main factor behind this ...

Contact Us

For technical specifications, project proposals, or partnership inquiries, please visit:
<https://www.meble-decorator.pl>

Scan QR Code for More Information



<https://www.meble-decorator.pl>