

How big an inverter should I use for a 1 5kw water pump





Overview

How do I choose the right inverter size for my AC well pump?

Getting the right inverter size for your AC well pump basically revolves around three factors: how much power your pump uses, how long it runs, and how much surge power it needs to start up. Keep reading to learn what size inverter is recommended for AC well pumps and the models that work best for different pump sizes.

What size inverter do I Need?

To determine the appropriate size of the inverter needed to run a pump, it is necessary to calculate the power requirements of the pump. The power requirements can be calculated using the following formula: $\text{Power (Watts)} = \text{Voltage (Volts)} \times \text{Current (Amps)}$ First, you need to identify the voltage and current requirements of the pump.

Do well pumps need an inverter?

Well pumps, which run on AC power, require an inverter to operate in off-grid systems or during power outages. The size of the inverter required for your AC well pump depends on a few critical factors: Wattage of the Pump: Inverter sizes are rated by their wattage capacity. To select the right inverter, you must know the wattage of your well pump.

How to choose an inverter for a water pump?

When selecting an inverter for a water pump, consider the following factors: Output Power: The inverter's output power must be sufficient to handle the starting and running current of the water pump. Output Frequency: The inverter's output frequency must match the motor's rated frequency to ensure proper pump operation.



How big an inverter should I use for a 1 5kw water pump



[Choosing a Solar Pump Inverter? These 5 Critical Questions ...](#)

May 5, 2025 · A 1.5kW single-phase surface pump would pair with a 2kW inverter. A 4kW three-phase submersible pump would need a 5kW inverter with strong MPPT and VFD support.

[Water Pump and Inverter Compatibility: The Ultimate Guide](#)

Aug 24, 2024 · What To Know The answer to this question depends on the type of water pump and the characteristics of the inverter. Using an inverter with these pumps can lead to ...



[The Only Inverter Size Chart You'll Ever Need](#)

Sep 25, 2023 · We created a comprehensive inverter size chart to help you select the correct inverter to power your appliances. The need for an inverter size chart first became apparent ...



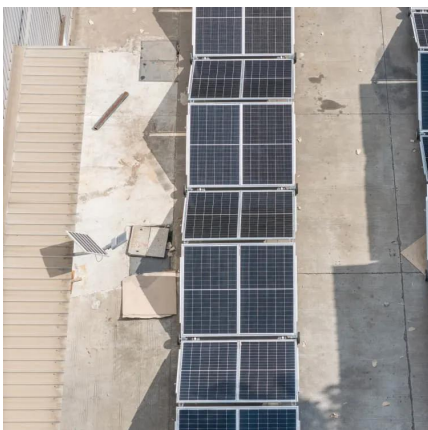
[What Size Inverter Do I Need?](#)

Learn how to calculate what size inverter you need with The Inverter Store's handy guide. We make the process straightforward for you to fit your ...



[How to Choose a Water Pump Inverter Based on Pump Type ...](#)

3 days ago · Large-size Pumps: These pumps exceed 5 horsepower and are typically used in large-scale agricultural, industrial, and municipal water systems. Select an inverter with a ...



[What size inverter is recommended for AC well pumps?](#)

Dec 5, 2024 · Here's the easy calculation to figure out what size inverter is recommended for AC well pumps, plus 5 top recommendations.



[What Size Inverter Do I Need To Run A Pump?](#)

Jan 12, 2024 · What Size Inverter Do I Need to Run a Pump? Nowadays, with the increasing demand for portable power solutions, many individuals find themselves in need of an inverter ...



[Choosing a Solar Pump Inverter? These 5](#)

...

May 5, 2025 · A 1.5kW single-phase surface pump would pair with a 2kW inverter. A 4kW three-phase submersible pump would need a 5kW ...

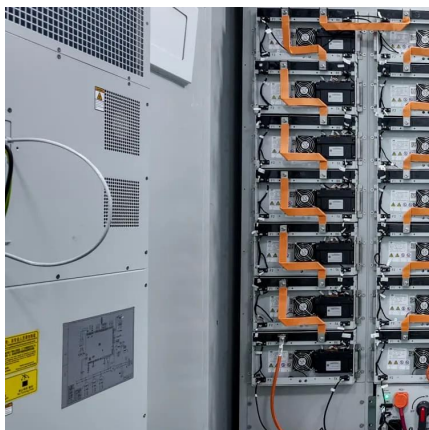
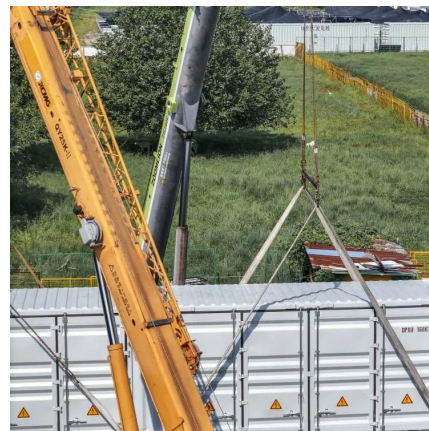


[What Size Inverter Do I Need?](#)

Learn how to calculate what size inverter you need with The Inverter Store's handy guide. We make the process straightforward for you to fit your exact needs.

[What Inverter Size for Well Pump to Use?](#)

Well pumps use a lot of power, so an inverter has to be the right size to work. Factors to consider are watts, pump type and running time.



[The Only Inverter Size Chart You'll Ever Need](#)

How to Determine What Size Inverter I Need? What Are The Two Types of Power loads? Inverter Size Chart What Will A 300W Inverter Run? What Will A 500W Inverter Run? What Will A 700W Inverter Run? What Will A 1000W Inverter Run? What Will A 1500W Inverter Run? What Will A 2000W Inverter Run? What Will A 3000W Inverter Run? Before we go any further, we highly recommend that you choose a pure sine wave inverter. This type of inverter delivers



high-quality electricity, similar to your utility company. This way, none of your appliances run the risk of being damaged. Now, when it comes to sizing your inverter, you always need to check your appliances' wattage and ensure t See more on climatebiz ampinv

How to Choose a Water Pump Inverter Based on Pump Type

...

3 days ago · Large-size Pumps: These pumps exceed 5 horsepower and are typically used in large-scale agricultural, industrial, and municipal water systems. Select an inverter with a ...

[How To Size A Solar Inverter in 3 Easy Steps](#)

What size solar inverter should you use for your system? In this guide we share how to correctly size a solar inverter in 3 steps.



[What Size Inverter Do I Need To Run A ...](#)

Jan 12, 2024 · What Size Inverter Do I Need to Run a Pump? Nowadays, with the increasing demand for portable power solutions, many individuals ...

[How to Calculate the Required Capacity of a Water Pump Inverter](#)

3 days ago · Therefore, you would require a water pump inverter with a capacity of at least 2,807 W for this application. Calculating the required capacity of a water pump inverter is



essential ...



Contact Us

For technical specifications, project proposals, or partnership inquiries, please visit:
<https://www.meble-decorator.pl>

Scan QR Code for More Information



<https://www.meble-decorator.pl>