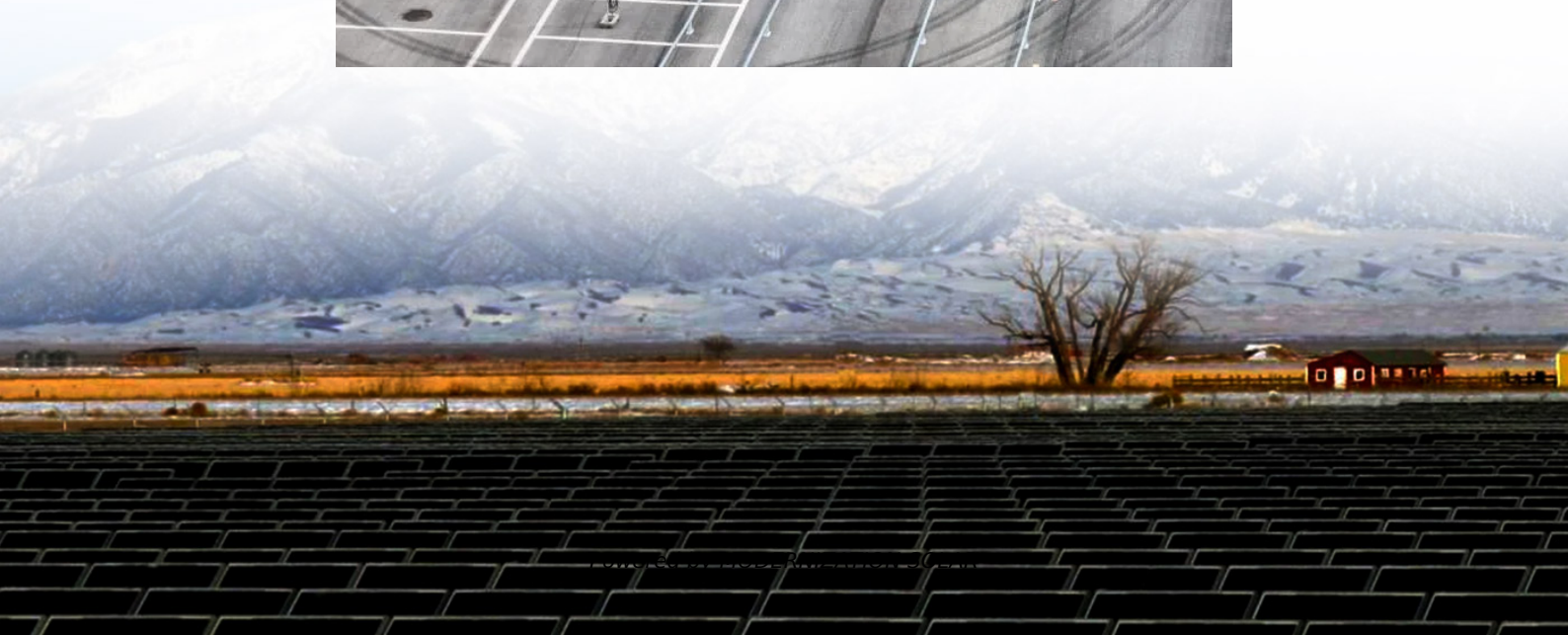
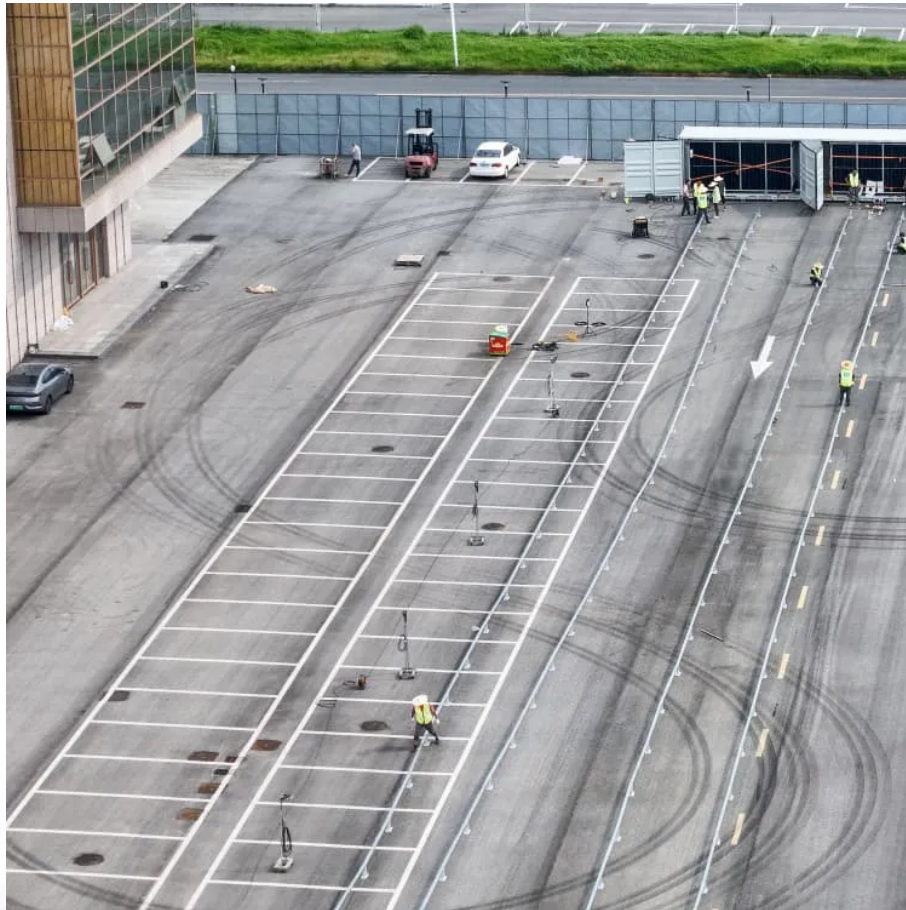


How big an inverter does a 200A battery need





Overview

What size inverter for a 12V 200Ah battery?

For a 12V 200Ah battery (2.4kWh), a 2000W inverter is ideal. Formula: Inverter Wattage \leq (Battery Voltage \times Ah Rating \times 0.8). Factor in surge power needs but prioritize sustained loads. Always check the battery's max discharge rate (C-rate) to avoid exceeding safe limits. When sizing for 24V or 48V systems, recalculate using the higher voltage.

How do I choose the right inverter size for my 200Ah lithium battery?

When it comes to choosing the right inverter size for your 200Ah lithium battery, there are a few factors you'll need to consider. The first is the power needs of the devices you plan on running off the inverter. Take into account their wattage requirements and how many devices will be connected at once.

What wattage Inverter should I use?

Match the inverter's continuous wattage rating to the battery's discharge capacity. For a 12V 200Ah battery (2.4kWh), a 2000W inverter is ideal. Formula: Inverter Wattage \leq (Battery Voltage \times Ah Rating \times 0.8). Factor in surge power needs but prioritize sustained loads.

What is the recommended battery size for an inverter?

Interpreting Results: Once you input the required data, the calculator will generate the recommended battery size in ampere-hours (Ah). For instance, if your power consumption is 500 watts, the usage time is 4 hours, and the inverter efficiency is 90%, the calculator might suggest a battery size of approximately 222 Ah.



How big an inverter does a 200A battery need



[What Size of Inverter Is Good for a 200Ah Battery?](#)

The best inverter size for a 200Ah battery depends on the system voltage and your power needs. A 12V 200Ah battery typically pairs well with a 1000W-2000W inverter, while a 24V setup can ...

[Calculate Battery Size for Inverter Calculator](#)

Mar 14, 2025 · The Calculate Battery Size for Inverter Calculator helps you determine the optimal battery capacity needed to support your inverter system. By inputting critical parameters such ...



[Which Inverter is Best for 200Ah Battery?](#)

Nov 20, 2025 · Find out which inverter works best with a 200Ah battery for reliable backup and efficient performance. This guide explains ideal inverter types, supported loads, and smart ...



[What Size Inverter Do I Need for a 200Ah Lithium Battery](#)

Apr 13, 2024 · How do you determine the right size inverter for a 200Ah lithium battery? The ideal inverter size depends on your power needs and the battery's voltage and capacity. For a 12V

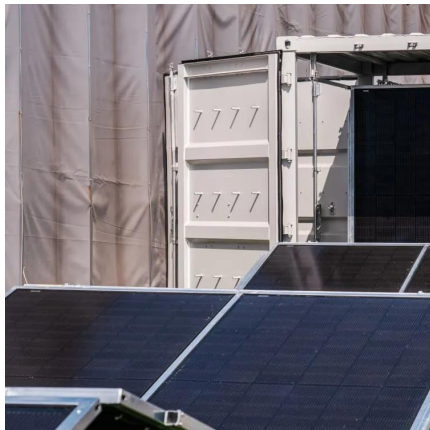


...



[Choosing the Best Inverter Size for a 200Ah Lithium Battery](#)

Jun 7, 2025 · When setting up an off-grid, solar, RV, or backup power system, one of the most critical decisions you'll make is choosing the best inverter size for your 200Ah lithium battery. ...



[What Size Inverter Do I Need for a 200Ah](#)

...

Apr 3, 2024 · When determining the appropriate inverter size for a 200Ah lithium battery, several key factors must be considered, including the ...



[Which Inverter is Suitable for a 200Ah Battery?](#)

Apr 23, 2025 · The 200Ah battery is large enough to handle various types of inverters, typically ranging from 850 VA to 2000W, depending on your power requirements and the type of ...





[Choosing the Best Inverter Size for a 200Ah ...](#)

Jun 7, 2025 · When setting up an off-grid, solar, RV, or backup power system, one of the most critical decisions you'll make is choosing the best ...



[What Size Inverter Do I Need for a 200Ah ...](#)

Apr 13, 2024 · How do you determine the right size inverter for a 200Ah lithium battery? The ideal inverter size depends on your power needs and ...

[Calculate Battery Size for Inverter Calculator](#)

Mar 14, 2025 · The Calculate Battery Size for Inverter Calculator helps you determine the optimal battery capacity needed to support your inverter ...



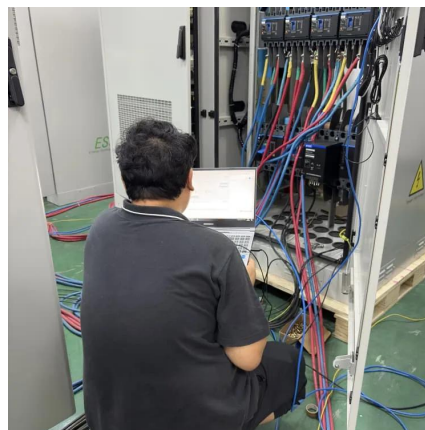
[What Size Inverter Do I Need for a 200Ah Lithium Battery?](#)

Apr 3, 2024 · When determining the appropriate inverter size for a 200Ah lithium battery, several key factors must be considered, including the battery's voltage, the total load you plan to ...



[Best Inverter for 200Ah Battery: A Complete Guide 2025](#)

Apr 16, 2025 · In this guide, we'll help you find the best inverter for your needs, whether you're a beginner or an experienced DIY enthusiast. Understanding the 200Ah battery and the inverter ...



[What Size Inverter Can I Run Off a 200Ah ...](#)

Aug 20, 2025 · You can run an inverter rated between 1500W and 2400W off a 200Ah lithium battery depending on voltage and usage. Typically, a 12V ...

[What Size Inverter Can I Run Off a 200Ah Lithium Battery?](#)

Aug 20, 2025 · You can run an inverter rated between 1500W and 2400W off a 200Ah lithium battery depending on voltage and usage. Typically, a 12V 200Ah battery supports up to about ...



[Can an Inverter Be Too Big for Your Battery System?](#)

How to Calculate the Right Inverter Size for Your Battery Match the inverter's continuous wattage rating to the battery's discharge capacity. For a 12V 200Ah battery (2.4kWh), a 2000W inverter ...





Which Inverter is Suitable for a 200Ah Battery?

Apr 23, 2025 · The 200Ah battery is large enough to handle various types of inverters, typically ranging from 850 VA to 2000W, depending on your ...



Contact Us

For technical specifications, project proposals, or partnership inquiries, please visit:
<https://www.meble-decorator.pl>

Scan QR Code for More Information



<https://www.meble-decorator.pl>