

Division of indoor and outdoor base stations





Overview

Where is a base station antenna located?

The base station antennas are usually placed on rooftops, in masts or on building walls. Antennas are sometimes also installed in shopping malls, airports, offices, and other places with many mobile phone users. Indoor antennas are usually placed on walls or on ceilings. Each base station can only serve a limited number of mobile devices at a time.

How many mobile devices can a base station serve?

Each base station can only serve a limited number of mobile devices at a time. As the number of mobile devices in a community grows, more base stations are needed. For that reason, more antennas are needed in such crowded locations as shopping malls where there are many mobile phone users.

How does a base station antenna work?

Base station antennas direct the radio signals away from the building or mast to obtain coverage in a certain area. The intensity of the radio waves is drastically reduced as the distance increases from the base station antenna.

Do mobile phones need a base station?

Mobile phones and other mobile devices require a network of base stations in order to function. The base station antennas transmit and receive RF (radio frequency) signals, or radio waves, to and from mobile phones near the base station. Without these radio waves, mobile communications would not be possible.



Division of indoor and outdoor base stations



Shanghai Leads China for Outdoor 5G Base Stations, Vice

(Yicai) Dec. 13 -- Shanghai continues to lead China in the number of outdoor base stations for fifth-generation mobile network technology, the city's vice mayor revealed. Shanghai has built ...

Base stations and networks

Base Stations Enable Mobile Communications
Antennas Are Placed in Various Locations
More Mobile Devices Means More Base Stations
Base Station Output Power Is Low
Exposure Limits Are Set by Independent Organizations
Exposure Levels Are Much Lower Than The Limits
Public Access Is Restricted Where Needed
No Adverse Health Effects According to The Who
The base station antennas are usually placed on rooftops, in masts or on building walls. Antennas are sometimes also installed in shopping malls, airports, offices, and other places with many mobile phone users. Indoor antennas are usually placed on walls or on ceilings. See more on ericsson DAMM Cellular Systems



Embrace the outdoor - DAMM

Streamlined maintenance and operation:
Building PMR networks with outdoor base stations eliminates the need for batteries, air conditioning units, and large spare parts stocks
...

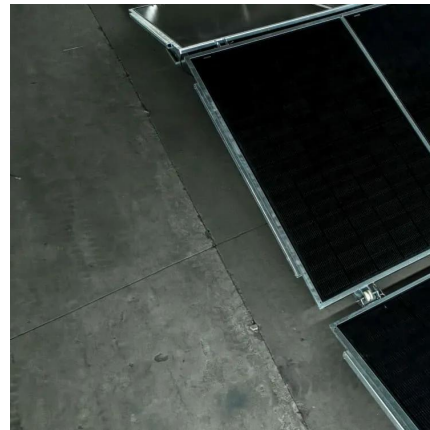
Base stations and networks



6 days ago · Base station output power is relatively low The antenna output power level is typically between 20 watts and a few hundred watts for an outdoor base station. Television ...

Shanghai to build 8,000 5G base stations in 2021

Jan 25, 2021 · By the end of October last year, Shanghai had built a total of 31,400 5G outdoor base stations and 49,800 indoor 5G small stations, achieving continuous 5G coverage in the ...



Shanghai to set up nearly 10,000 new 5G-A base stations this ...

Feb 7, 2025 · Shanghai will establish up to 10,000 new 5G-A base stations this year, routing more than 70 percent of the city's internet traffic through 5G network.

Annex: Base-Station Site Solutions

Apr 17, 2025 · All mobile network vendors offer base stations based on Software Defined Radio (SDR) with various options for installing the base-station modules indoor and outdoors, just by ...





Embrace the outdoor

Streamlined maintenance and operation:
Building PMR networks with outdoor base stations eliminates the need for batteries, air conditioning units, and large spare parts stocks
...

[HongQiao Railway Station , 5G , Huawei Enterprise](#)

Sep 11, 2025 · China Mobile Shanghai selected Huawei's 5G Digital Indoor System (DIS), currently the industry's only commercially-available solution for 5G indoor coverage. The ...



[Green networks in action: China Mobile](#)

Nov 19, 2024 · In Xiong'an New Region, China Mobile's low-carbon initiatives like cooling cubes and outdoor base stations are saving hundreds of thousands of kWh annually, making a big ...

[Shanghai home to 92,000 5G base stations](#)

Mar 30, 2024 · By the end of 2023, 38.5 percent of the city's mobile communication base stations were 5G base stations. Shanghai recorded a total of over 18.7 million 5G mobile phone users ...





Shanghai Has Built Over 72,000 5G Macro Base Stations

Jun 30, 2023 · Shanghai has accumulated over 72,000 outdoor 5G base stations and 310,000 indoor small stations, promoted about 900 "dual-gigabit" innovative applications, and created ...

Shanghai Leads China for Outdoor 5G Base ...

(Yicai) Dec. 13 -- Shanghai continues to lead China in the number of outdoor base stations for fifth-generation mobile network technology, the city's ...



Contact Us

For technical specifications, project proposals, or partnership inquiries, please visit:
<https://www.meble-decorator.pl>

Scan QR Code for More Information



<https://www.meble-decorator.pl>