

Communication green base station is the core or





Overview

Are green cellular base stations sustainable?

This study presents an overview of sustainable and green cellular base stations (BSs), which account for most of the energy consumed in cellular networks. We review the architecture of the BS and the power consumption model, and then summarize the trends in green cellular network research over the past decade.

What is a green base station solution?

The green base station solution involves base station system architecture, base station form, power saving technologies, and application of green technologies. Using SDR-based architecture and distributed base stations is a different approach to traditional multiband multimode network construction.

Why is a base station important?

Environmental protection is a global concern, and for telecom operators and equipment vendors worldwide, developing green, energy-saving technologies for wireless communications is a priority. A base station is an important element of a wireless communications network and often the main focus of power saving in the whole network.

What should a base station do in a wireless communications network?

In a wireless communications network, the base station should maintain high-quality coverage. It should also have the potential for upgrade or evolution. As network traffic increases, power consumption increases proportionally to the number of base stations. However, reducing the number of base stations may degrade network quality.



Communication green base station is the core or



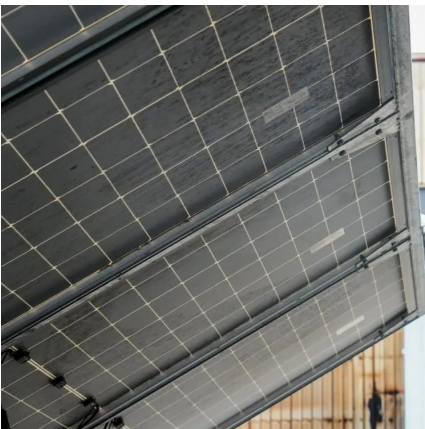
Green Wireless Communication , Wireless Personal Communications

...

May 16, 2025 · Green networking solutions help to reduce energy consumption by integrating energy-efficient network devices for a wide range of tasks and communication areas. This ...

[Base Transceiver Station: Core Functionality Explained](#)

Apr 5, 2025 · Discover what a Base Transceiver Station is and how it's pivotal in mobile communication networks. Unlock the essentials of BTS functionality here.



[Low-Carbon Sustainable Development of 5G Base Stations in ...](#)

May 4, 2024 · Gonçalves et al. (2020) explored carbon neutrality evaluation of 5G base stations from the perspective of network structure and carbon sequestration. Despite the growing ...

[Base Stations: The Core and Future of Telecom Networks](#)

Sep 12, 2025 · Signal Coverage and Connectivity: Base stations broadcast signals to create a circular signal coverage area. By strategically positioning base stations, telecom providers ...



[The carbon footprint response to projected base stations of ...](#)

Apr 20, 2023 · We linked these provincial base stations with provincial Gross Domestic Product (GDP), population (POP), and big data development level (BDDL) and established a statistical ...



[Green Base Station Solutions and Technology](#)

Mar 20, 2011 · Green Base Station Solutions and Technology Environmental protection is a global concern, and for telecom operators and equipment ...



[China Mobile - Renewable energy and green base station ...](#)

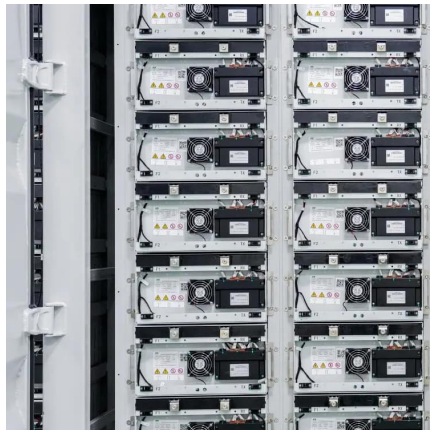
Aug 7, 2025 · China Mobile added 467,000 5G base stations while achieving a 2% reduction in overall base station energy consumption in 2024.





The Applicability of Macro and Micro Base Stations for 5G Base Station

Oct 14, 2022 · The construction of the 5G network in the communication system can potentially change future life and is one of the most cutting-edge engineering fields today. The 5G base ...



[Low-carbon upgrading to China's communications base stations ...](#)

Nov 21, 2025 · It is important for China's communications industry to reduce its reliance on grid-powered systems to lower base station energy costs and meet nationa...

[What is a Base Station? -- From Communication Core to ...](#)

Aug 19, 2025 · The base station is an indispensable piece of infrastructure in the mobile communication network, silently supporting every phone call, message, and network ...



gsm base station

Nov 30, 2023 · A GSM (Global System for Mobile Communications) base station, also known as a BTS (Base Transceiver Station), is a critical component in a GSM cellular network. It provides ...



Green and Sustainable Cellular Base Stations: An Overview ...

Apr 25, 2017 · Energy efficiency and renewable energy are the main pillars of sustainability and environmental compatibility. This study presents an overview of sustainable and green cellular ...

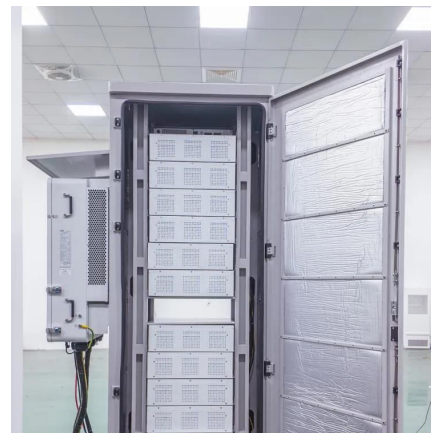


Algorithms for energy-harvesting wireless networks (Chapter 2)

Aug 5, 2012 · Part I Communication architectures and models for green radio networks 1 Fundamental trade-offs on the design of green radio networks 3 PHY and MAC layer ...

What is a green energy base station?

Nov 5, 2024 · You hold the power to shape a sustainable future by embracing green energy in telecommunications. Traditional energy sources harm the environment, but renewable energy ...



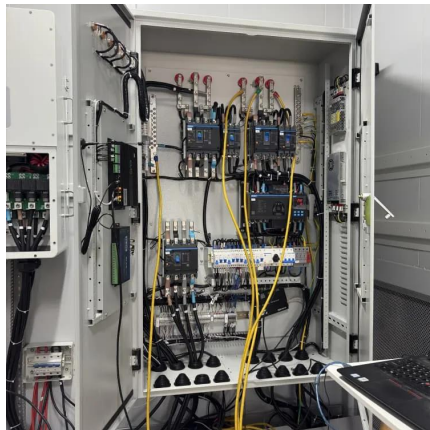
RBS (radio base station)

Jun 12, 2023 · A Radio Base Station (RBS), also known as a base transceiver station (BTS), is a key component of a cellular network ...



5G RAN Architecture: Nodes And Components

Jan 24, 2023 · Discover 5G RAN and vRAN architecture, its nodes & components, and how they work together to revolutionize high-speed, low-latency wireless communication.

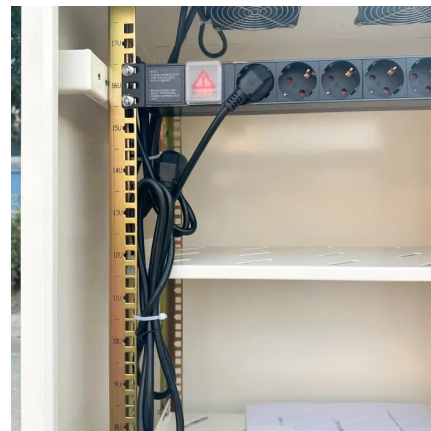


Green Base Station Solutions and Technology

Mar 20, 2011 · Green Base Station Solutions and Technology Environmental protection is a global concern, and for telecom operators and equipment vendors worldwide, developing green, ...

BS (Base Station)

Mar 4, 2023 · A base station (BS) is a key component of modern wireless communication networks, providing the interface between wireless ...



Communication Base Station Green Energy , Huijue Group E ...

As global telecom networks expand exponentially, how can communication base station green energy solutions address the sector's mounting carbon footprint? With over 7 million cellular ...



Basestation

A base station (BS) is defined as a fixed communication facility that manages radio resources for one or more base transceiver stations (BTSs), facilitating radio channel setup, frequency ...



[Energy-Efficient Base Stations , part of Green Communications](#)

Aug 29, 2022 · With the explosion of mobile Internet applications and the subsequent exponential increase of wireless data traffic, the energy consumption of cellular networks has rapidly ...

Contact Us

For technical specifications, project proposals, or partnership inquiries, please visit:
<https://www.meble-decorator.pl>

Scan QR Code for More Information



<https://www.meble-decorator.pl>