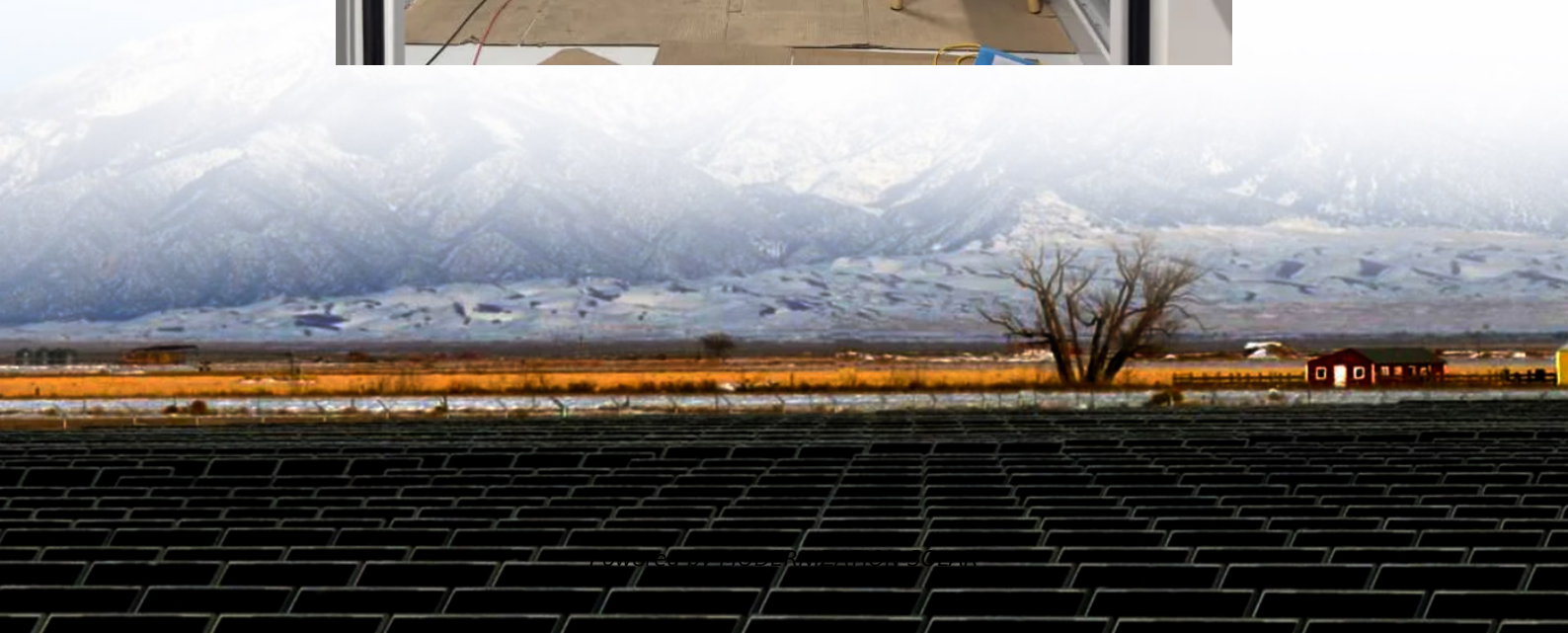


Battery cabinet grounding wire site





Overview

Why is grounding important in battery management systems (BMS)?

Grounding in Battery Management Systems (BMS) is crucial for ensuring voltage and current measurement accuracy. Accurate voltage measurements depend on a stable ground reference. If the BMS ground is improperly connected or affected by noise, voltage readings can become distorted.

How do you ground a safety cabinet?

When grounding a safety cabinet, you have internal and external considerations to make. For exterior cabinet grounding, locate the safety cabinet's ground screw just below the green dot on the right hand side of the cabinet. Use a 5/16" (8 mm) wrench or nut driver to loosen screw. Attach the ground wire and retighten screw.

How do I equalize the grounding of a battery pack?

Additionally, connecting the isolated battery pack ground to earth ground before making other connections between the pack and the test system or external communications interface can help equalize grounds. 11. Connection Scenarios The following describes BMS grounding issues in different connection scenarios.

When should a safety cabinet be grounded?

As an industry best practice, we recommend grounding the cabinet when dispensing Class 2 combustible liquids if the liquids are near, at, or above the liquid's flashpoint temperature. When grounding a safety cabinet, you have internal and external considerations to make.



Battery cabinet grounding wire site



[Energy Storage Battery Cabinet Grounding Wire ...](#)

Summary: Proper grounding of energy storage battery cabinets is critical for safety, system reliability, and regulatory compliance. This article explores grounding standards, installation ...

[What is the grounding requirement for a battery cabinet?](#)

The grounding resistance should be measured using a grounding resistance tester, and the results should be recorded. If the grounding resistance is too high, additional grounding ...



[Why Should Battery Racks Be Grounded? Safety and ...](#)

Battery racks should be grounded to prevent electrical hazards, reduce fire risks, and ensure compliance with safety standards like NEC Article 480 and NFPA 70. Grounding stabilizes ...

[Grounding a Justrite Safety Cabinet, Justrite](#)

For exterior cabinet grounding, locate the safety cabinet's ground screw just below the green dot on the right hand side of the cabinet. Use a 5/16" (8 mm) wrench or nut driver to loosen screw. ...



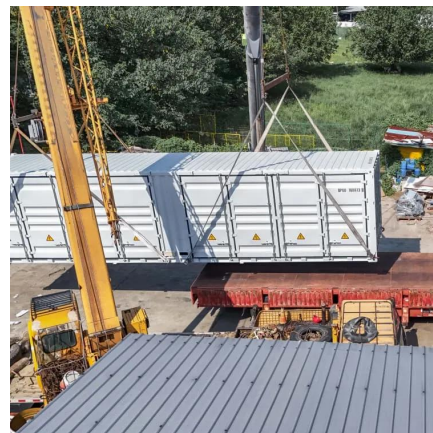
[importance of earthing a rack battery and its ...](#)

Mar 18, 2023 · The bond wire going from the cabinet door to the cabinet, takes care the door. You can run a ground wire from the cabinet side ...



[R16AN0049EU: Importance of Grounding in Battery ...](#)

Jul 2, 2024 · Importance of Grounding in Battery Management Systems This application note explores the crucial role of grounding in battery management systems (BMS). It starts with ...



[importance of earthing a rack battery and its cabinet](#)

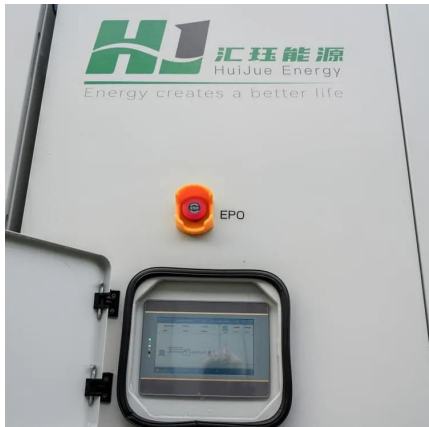
Mar 18, 2023 · The bond wire going from the cabinet door to the cabinet, takes care the door. You can run a ground wire from the cabinet side connection of this wire, to your grounding system.





Energy Storage Cabinet Grounding , Huijue Group E-Site

When installing energy storage cabinets, have you considered how a single grounding flaw could compromise entire systems? Recent UL 9540A test data reveals 23% of thermal runaway ...



Earthing the battery cabinet

Jun 13, 2025 · Danger to life due to electric shock due to touching live components or cables with insufficient or no grounding If there is insufficient or no earthing, high voltages can be present ...

Should Battery Racks Be Earthed? Safety and Compliance ...

Battery racks housing lithium-ion or lead-acid batteries generate potential leakage currents, especially during charging. Grounding creates a low-resistance path to earth, diverting ...



Why can't the battery cabinet be grounded

Does a battery cabinet need a grounding electrode? Article 250.162, Direct-Current Circuits and Systems to be Grounded, applies to systems operating at greater than 60 V but not greater ...



[Grounding a Justrite Safety Cabinet , Justrite](#)

For exterior cabinet grounding, locate the safety cabinet's ground screw just below the green dot on the right hand side of the cabinet. Use a 5/16" (8 ...



Contact Us

For technical specifications, project proposals, or partnership inquiries, please visit:
<https://www.meble-decorator.pl>

Scan QR Code for More Information



<https://www.meble-decorator.pl>