

Base station power maintenance processing





Overview

Why do cellular networks need a base transceiver station?

The widespread deployment of cellular networks has improved communication access, driving economic growth and enhancing social connections across diverse regions. Base Transceiver Stations (BTSs), are foundational to mobile networks but are vulnerable to power failures, disrupting service delivery and causing user inconvenience.

How do base stations affect mobile cellular network power consumption?

Base stations represent the main contributor to the energy consumption of a mobile cellular network. Since traffic load in mobile networks significantly varies during a working or weekend day, it is important to quantify the influence of these variations on the base station power consumption.

What is a Base Transceiver Station (BTS)?

1. Introduction Base Transceiver Stations (BTS) are fundamental building blocks of cellular mobile networks, establishing seamless wireless connection between user equipment and core network for voice calls, data transmission, and short message services , .

Is there a direct relationship between base station traffic load and power consumption?

The real data in terms of the power consumption and traffic load have been obtained from continuous measurements performed on a fully operated base station site. Measurements show the existence of a direct relationship between base station traffic load and power consumption.



Base station power maintenance processing



[Optimization of Communication Base Station Battery ...](#)

Dec 7, 2023 · In the communication power supply field, base station interruptions may occur due to sudden natural disasters or unstable power supplies. This work studies the optimization of ...

[Management and maintenance of base station switching power ...](#)

Dec 11, 2024 · This article focuses on the three parts of switching power supply: "types and usage scenarios, configuration principles and algorithms, and daily management and maintenance".



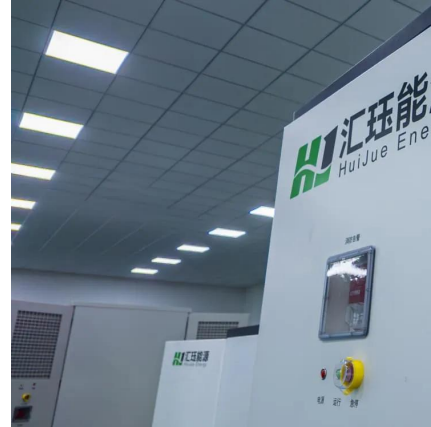
[Predictive maintenance of base transceiver station ...](#)

Nov 1, 2023 · ECONET Zimbabwe has been experiencing unprecedented BTS power system failures for the past five years. Team Data Science Process was the pillar of the study ...



[Energy Management of Base Station in 5G and B5G: Revisited](#)

Apr 19, 2024 · Since mmWave base stations (gNodeB) are typically capable of radiating up to 200-400 meters in urban locality. Therefore, high density of these stations is required for ...



[Optimal energy-saving operation strategy of 5G base station ...](#)

Dec 1, 2025 · To further explore the energy-saving potential of 5 G base stations, this paper proposes an energy-saving operation model for 5 G base stations that incorporates ...



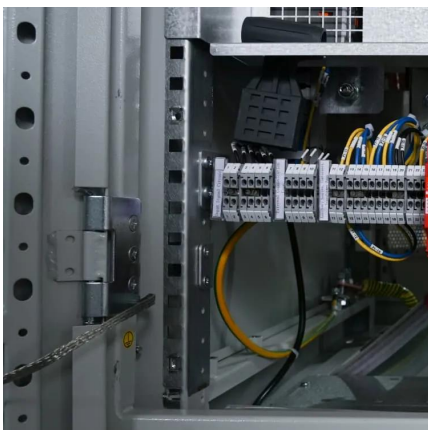
[Machine learning for base transceiver stations power failure ...](#)

Dec 1, 2024 · The widespread deployment of cellular networks has improved communication access, driving economic growth and enhancing social connections across diverse regions. ...



[Power Management of Base Transceiver Stations for Mobile ...](#)

May 30, 2022 · A Base Transceiver Station (BTS) is a piece of equipment consisting of telecommunication devices and the air interface of the mobile network. It is referred to as the ...





[Power Management of Base Transceiver](#)

...

May 30, 2022 · A Base Transceiver Station (BTS) is a piece of equipment consisting of telecommunication devices and the air interface of the ...

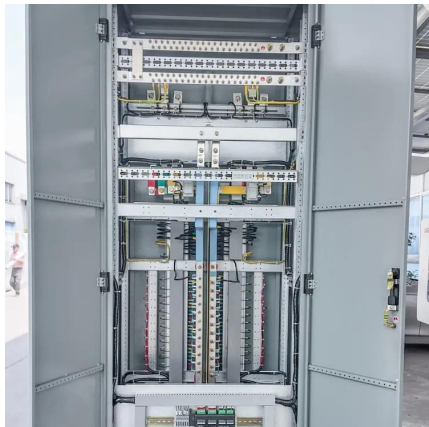


[Optimization of Communication Base Station ...](#)

Dec 7, 2023 · In the communication power supply field, base station interruptions may occur due to sudden natural disasters or unstable ...

[An Overview of Energy-efficient Base Station ...](#)

Jan 16, 2024 · plete, with the delay increasing with the size of the base station. Modern base station power profiles (e.g., [15]) usually include such limitat ons, and should be used when ...



[The Unsung Hero of Telecom Energy: Why Base Station Power ...](#)

Nov 17, 2025 · With the rapid deployment of 5G networks and the growing popularity of IoT applications, the telecom power and environment monitoring system has become a critical ...



Management and maintenance of base

...

Dec 11, 2024 · This article focuses on the three parts of switching power supply: "types and usage scenarios, configuration principles and ...



Power Base Stations Predictive Maintenance , Huijue Group ...

Why Traditional Maintenance Models Are Failing? Did you know power base stations lose \$1.2 million annually per site due to unplanned outages? As 5G deployment accelerates globally, ...

Contact Us

For technical specifications, project proposals, or partnership inquiries, please visit:
<https://www.meble-decorator.pl>

Scan QR Code for More Information



<https://www.meble-decorator.pl>