

# Base station battery replacement quota





## Overview

---

How many battery groups does a base station have?

The original battery allocation result is largely skewed that over 65 percent base stations are equipped with only one battery group. Our framework considers both the base station situations and battery features, allocating 2 battery groups to most base stations and 3 or 4 battery groups to those with long-time power outages.

How long do base station batteries last?

After using BatAlloc to allocate suitable numbers of battery groups for base stations, the average battery lifetime has achieved to 4.3 years, roughly 1.8 times longer than that of the original allocation. The results indicate that our framework can also better protect base station batteries and significantly prolong their average lifetimes.

How does a battery group work in a base station?

The equipment in base stations is usually supported by the utility grid, where the battery group is installed as the backup power. In case that the utility grid interrupts, the battery discharges to support the communication switching equipment during the period of the power outage.

What happens if a base station has multiple battery groups?

When a base station is equipped with multiple battery groups, the impact of activities is actually shared by all these batteries. Then the impact on every single battery should be proportionally reduced. In practice, there may be other requirements that limit the number of battery groups being installed at a base station.



## Base station battery replacement quota

---



### [Telecom Base Station Backup Power Solution: ...](#)

Jun 5, 2025 · Discover the 48V 100Ah LiFePO4 battery pack for telecom base stations: safe, long-lasting, and eco-friendly. Optimize reliability with ...

### [How much energy storage battery is used in base stations?](#)

Aug 25, 2024 · These batteries enable base stations to operate efficiently, particularly when coupled with solar or wind energy systems. As the demand for connectivity rises, the efficiency ...



### [How to Determine the Right Battery Capacity ...](#)

Mar 10, 2025 · Example: If a base station consumes 500W and needs 4 hours of backup at 48V, the required capacity is:  
 $500W \times 4h / 48V = 41.67Ah$  ...

### [Telecom Base Station Battery Replacement Process](#)

Telecom base stations--integral nodes in wireless networks--rely heavily on uninterrupted power to maintain connectivity. To ensure continuous operation during power outages or grid ...



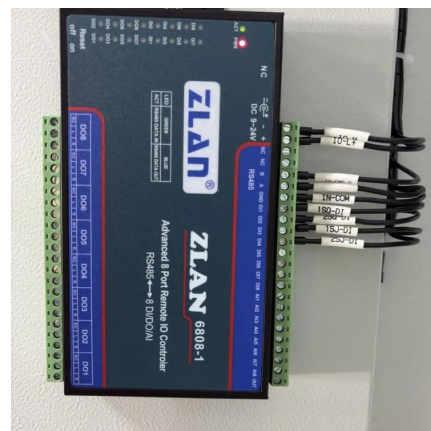
### [Telecom Base Station Backup Power Solution: Design Guide ...](#)

Jun 5, 2025 · Discover the 48V 100Ah LiFePO4 battery pack for telecom base stations: safe, long-lasting, and eco-friendly. Optimize reliability with our design guide.



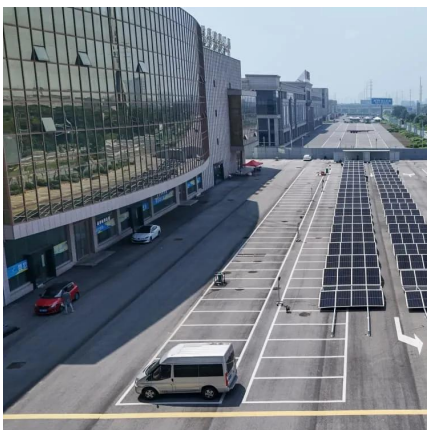
### [Base station battery replacement plan](#)

Oct 3, 2025 · The original battery allocation result is largely skewed that over 65 percent base stations are equipped with only one battery group. Our framework considers both the base ...



### [Main Causes of Shortened Battery Lifespan in Base Stations](#)

Mar 13, 2025 · Once installed in communication base stations, these batteries typically do not require replacement for several years. Therefore, it is crucial to enhance battery maintenance ...

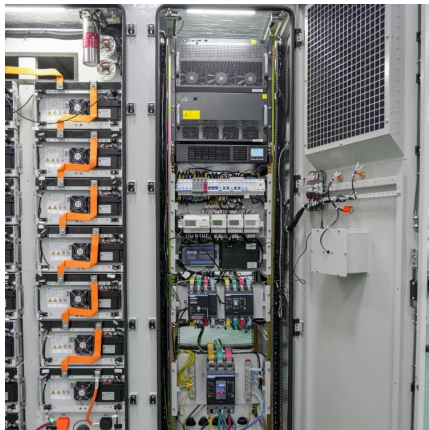






## Base Station Energy Storage Assessment Huijue Group E-Site

Average downtime costs: \$5,600/hour per urban base station  
Battery replacement cycles shortened from 5 years to 2.3 years  
Energy waste exceeding 18% in hybrid power systems



## Optimum sizing and configuration of electrical system for

Jul 1, 2025 · The rising demand for cost effective, sustainable and reliable energy solutions for telecommunication base stations indicates the importance of integration and exploring the ...

## Backup Battery Analysis and Allocation against Power ...

Jan 17, 2022 · Battery groups are installed as backup power in most of the base stations in case of power outages due to severe weathers or human-driven accidents, particularly in remote ...



## BASE STATION BATTERY REPLACEMENT QUOTA

Battery cabinet new energy base station power generation  
Base station energy cabinet: a highly integrated and intelligent hybrid power system that combines multi-input power modules ...



## How to Determine the Right Battery Capacity for Telecom Base Stations

Mar 10, 2025 · Example: If a base station consumes 500W and needs 4 hours of backup at 48V, the required capacity is:  
 $500W \times 4h / 48V = 41.67Ah$  Choosing a battery with a slightly higher ...



## Contact Us

---

For technical specifications, project proposals, or partnership inquiries, please visit:  
<https://www.meble-decorator.pl>

## Scan QR Code for More Information



<https://www.meble-decorator.pl>