

390W solar panel size





Overview

What is the standard size of 390 watt solar panels?

The standard size of a 390 watt solar panel is 72 cells and its dimensions are compact enough to set an installation in a small area, such as on the roof. You can buy 390w solar panels from leading manufacturers at the best price on our website. Our experts are also available to provide advice about your solar system design.

How much does a 330W solar panel weigh?

330W solar panels tend to weigh about 40 lbs, being approximately 65 inches long and 43 inches wide. Monocrystalline modules with this wattage tend to have 60 cells, but polycrystalline ones could have 72 due to lower efficiency. The efficiency range of 330W solar panels lies between 15 and 22% depending on the manufacturer.

How big is a 370w solar panel?

Each 370W panel measures about 1.75m x 1m. 100kW solar power systems are mostly suitable for Larger businesses with high energy needs. This size of solar power system is classed as "Commercial/Industrial". A 100kW solar system will certainly cost a different amount depending on the solar business you buy it from.

Which solar panel has the highest power output?

High-Power Output. Made in the USA. The MSE390SR9S PERC 72 mono-crystalline solar panel is a 72 cell solar panel with the highest power output in its class. It's high efficiency and certified reliability make it ideal for utility grid-tied installations including ground-mounted and commercial rooftop solar panel systems.



390W solar panel size



[390 Watt Solar panels for sale , Prices, dimensions, weight, ...](#)

Dec 5, 2025 · 390 Watt Solar panels' range of prices, dimensions, sizes, voltage output, specifications datasheets

[Lingyang Energy , Mono Black 390W~410W](#)

Zhengzhou Lingyang New Energy Technology Co., Ltd. Solar Panel Series Mono Black 390W~410W. Detailed profile including pictures, certification ...



[Mission Solar MSE390SR9S 390W PERC 72 ...](#)

The MSE390SR9S PERC 72 mono-crystalline solar panel is a 72 cell solar panel with the highest power output in its class. It's high efficiency and ...



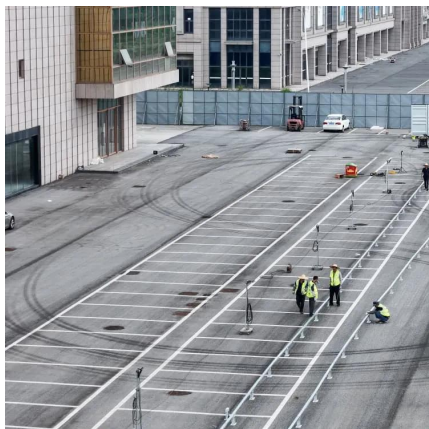
[TH390-390PM5-60SB 390W Solar Panel Information](#)

TH390-390PM5-60SB Solar Panel Product Information - (390W) by Tongwei Solar including datasheet and warranty information where available.



[Trina 390W \(Pallet of 36\) Bifacial Solar Panels TSM ...](#)

Trina Solar Vertex S+ 390W All Black TOPCon Bifacial Mono Solar Panel TSM-390NE09RC.05 High Efficiency , Sleek Design , Built to Last Pallet-Only , 36 Panels per Pallet Enhanced ...



Trina 390W Solar Panel

Trina 390 Watt 120 Cell VERTEX S Solar Panel - TSM-390DE09.08 Solar Panel with 1/3 cut monocrystalline cells for exceptional performance and shade-tolerance. 1754 x 1096 x 30mm ...



[Mission Solar MSE390SR9S 390W PERC 72 Solar Panel](#)

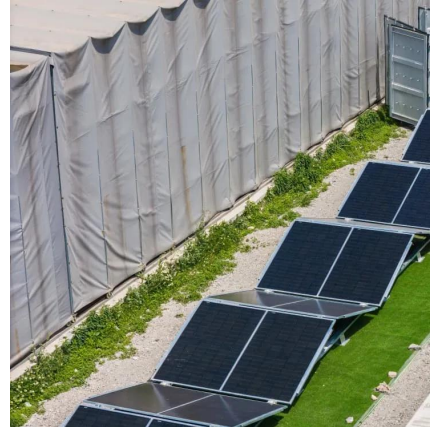
The MSE390SR9S PERC 72 mono-crystalline solar panel is a 72 cell solar panel with the highest power output in its class. It's high efficiency and certified reliability make it ideal for utility grid ...





[Hyundai 390W Solar Panel Bifacial 144-cell HiS-S390PI ...](#)

Jul 11, 2021 · Hyundai 390W Solar Panel Bifacial
144-cell HiS-S390PI Commercial 756 panels per
Container (Truckload) at A1 SolarStore



[JA Solar 390W Solar Panel 108 cell JA- JAM54-S31-390MR](#)

Aug 12, 2025 · JA Solar 390W Solar Panel 108 cell
JA-JAM54-S31-390MR features class leading
power output that makes it ideal for any
installations including commercial and rooftop
systems.



[TSM-390DE09C.07 Complete Guide: Specs, Performance](#)

Aug 31, 2025 · Comprehensive guide to Trina's
TSM-390DE09C.07 390W bifacial solar panel.
Technical specs, performance analysis,
installation guide, and best alternatives in 2025.



[Lingyang Energy , Mono Black 390W~410W , Solar Panel ...](#)

Zhengzhou Lingyang New Energy Technology
Co., Ltd. Solar Panel Series Mono Black
390W~410W. Detailed profile including pictures,
certification details and manufacturer PDF



[JA Solar 390W Solar Panel 108 cell JA-JAM54 ...](#)

Aug 12, 2025 · JA Solar 390W Solar Panel 108 cell JA-JAM54-S31-390MR features class leading power output that makes it ideal for any ...



[Trina 390W \(Pallet of 36\) Bifacial Solar Panels ...](#)

Trina Solar Vertex S+ 390W All Black TOPCon Bifacial Mono Solar Panel TSM-390NE09RC.05 High Efficiency , Sleek Design , Built to Last Pallet ...

Contact Us

For technical specifications, project proposals, or partnership inquiries, please visit:
<https://www.meble-decorator.pl>

Scan QR Code for More Information



<https://www.meble-decorator.pl>